



ENTERPRISE

Unity Orchestrator

Unity Orchestrator offers customers the unique ability to centrally assign business intent policies to secure and control all Silver Peak Unity EdgeConnect software-defined Wide Area Network (SD-WAN) traffic. An intuitive user interface provides unprecedented levels of visibility into both data center and cloud-based applications.

Key Features

- **Single Screen Administration:** Enables rapid and consistent implementation of network-wide business intent policies, eliminating many of the repetitive and mundane manual steps required to configure and connect remote offices and branch locations
- **Centralized Orchestration and Policy Automation:** Empowers network administrators to centrally define and orchestrate granular security policies and create secure end-to-end zones across any combination of users, application groups and virtual overlays, pushing configurations to sites in accordance with business intent. In addition, it offers seamless drag and drop service chaining to next generation security services

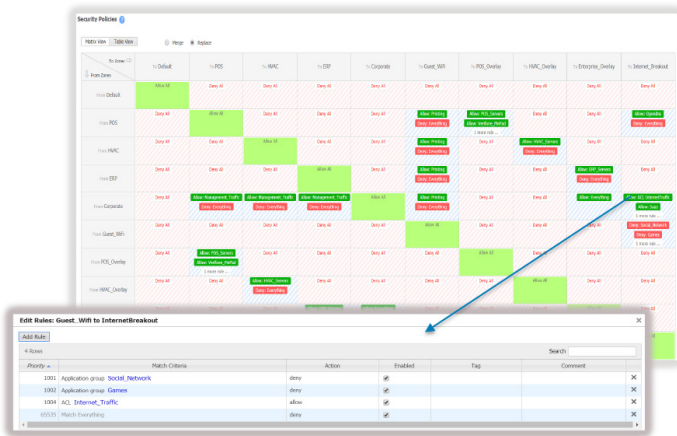


Figure 1: A matrix view from Orchestrator, provides an easy-to-read, intuitive visualization of configured zones and defined whitelist exceptions.

- **Live View:** Monitors real-time throughput, loss, latency and jitter across business intent overlays and the underlying transport services to proactively identify potential performance impacts
- **Granular Real-Time Monitoring and Historical Reporting:** Provides specific details into application, location, and network statistics, including continuous performance monitoring of loss, latency, and packet ordering for all network paths; identifies all web and native application traffic by name and location, and alarms and alerts allow for faster resolution of network issues
- **Bandwidth Cost Savings Reports:** Documents the cost savings for moving to broadband connectivity

SD-WAN Deployments Done Faster

Unity Orchestrator™ enables secure zero-touch provisioning of Unity EdgeConnect™ appliances in the branch. Orchestrator automates the assignment of business intent policies to ensure faster and easier connectivity across multiple branches, eliminating the configuration drift that can come from manually updating rules and access control lists (ACLs) on a site-by-site basis. With Orchestrator, customers can:

- Avoid WAN reconfigurations by delivering applications to users in customized virtual overlays
- Align application delivery to business goals through business intent policies
- Simplify branch deployments with EdgeConnect Profiles that describe the virtual and physical configuration of the location

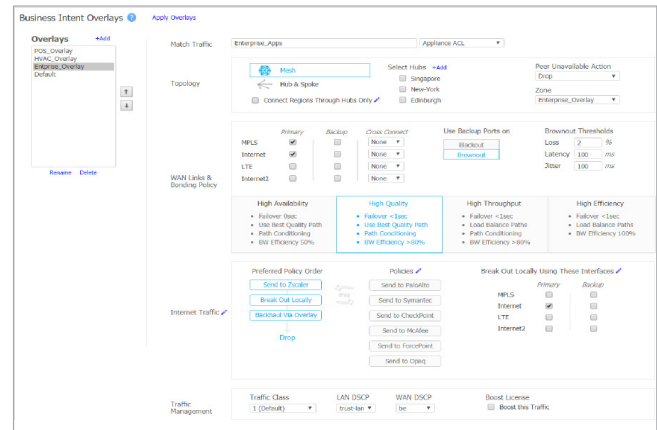


Figure 2: Unity Orchestrator enables centralized definition and automated distribution of network-wide business intent policies to multiple branch offices.

Real-Time Health Monitoring and Historical Reporting

Orchestrator provides specific details into SD-WAN health and performance:

- Appliance dashboard displays a centralized summary of appliances connected on the network, top talkers, applications, topology map and more
- Health map provides a high-level view of EdgeConnect appliance status and network health based on configured thresholds for packet loss, latency and jitter
- Monitoring and reporting tools generate and schedule multiple customized reports to track a variety of performance metrics; reports may be scheduled on a regular basis and automatically sent to specific individuals or departments



Figure 3: Unity Orchestrator monitoring report on application consumption.

Gain Control over the Cloud

Gain an accurate picture of how Software-as-a-Service (SaaS) and Infrastructure-as-a-Service (IaaS) are being used within the organization.

- Name-based identification and reporting of all cloud and data center-hosted applications
- Tracking of SaaS provider network traffic
- Cloud Intelligence provides internet mapping of optimal egress to SaaS services

Flexible Deployment

- On-premise: Deploy Orchestrator as a virtual machine in an existing environment
- Private cloud: Deploy Orchestrator as a virtual instance within Amazon Web Services (AWS)
- Cloud-hosted Orchestrator: A Silver Peak cloud-hosted Orchestrator provides a highly reliable, zero-CAPEX alternative deployment model. With an optional license, organizations can subscribe to Orchestrator as a software service that supports all Orchestrator features without the complexity of managing on premise virtual compute and storage resource. Unique Orchestrator instance for each enterprise customer ensures secure SD-WAN management, monitoring and reporting.

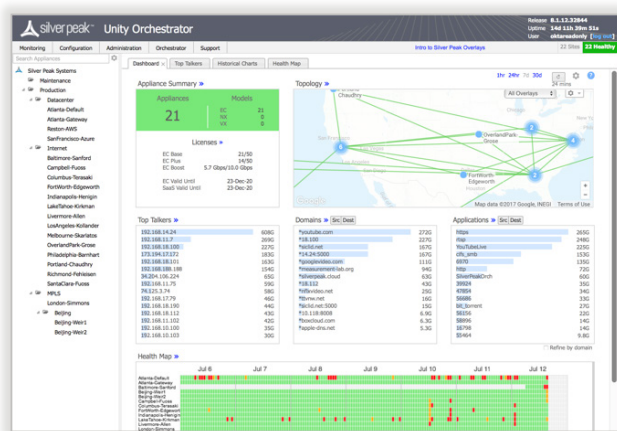


Figure 4: Unity Orchestrator Dashboard summarizes overall SD-WAN health, appliance status, topology and top applications.

Orchestrator Licensing

- Unity Orchestrator, hosted on premise or in a private cloud, is included with the purchase of Unity EdgeConnect (see [Unity EdgeConnect data sheet](#))
- Optional cloud-hosted Orchestrator requires a separate subscription

Delivering Real Business Value

EdgeConnect is the most agile SD-WAN unified platform that also powers industry-leading performance improvements to any form of connectivity. Silver Peak customers benefit from significant:

- **Performance:** End-user satisfaction and productivity are significantly improved due to consistent and enhanced performance and availability for both legacy and cloud applications.
- **Visibility and Control:** Customers benefit from unprecedented levels of visibility into both legacy and cloud applications.
- **Security:** Centralized segmentation of users, applications and WAN services into secure zones and automated application traffic steering across the LAN and WAN in compliance with predefined security policies, regulatory mandates and business intent.
- **Extensibility:** Fully compatible with existing WAN infrastructure hardware and transport services, customers can rapidly and non-disruptively augment or replace their MPLS networks with any form of broadband connectivity. Furthermore, customers can replace conventional routers with EdgeConnect SD-WAN that consolidates network functions like SD-WAN, WAN optimization, routing and security into a single software instance; all managed centrally from the Orchestrator. Easy integration with orchestration systems is provided via RESTful APIs.

- **Savings:** With EdgeConnect, customers can dramatically lower connectivity, equipment and network administration costs; these savings are achieved through:
 - Reduction in bandwidth costs by actively using broadband connectivity
 - OPEX: Reducing the time and expertise needed to connect branch offices
 - CAPEX: Reducing appliance sprawl and moving to a “thin branch” architecture



Company Address

Silver Peak Systems, Inc
2860 De La Cruz Blvd.
Santa Clara, CA 95050



Phone & Fax

Phone: +1 888 598 7325
Local: +1 408 935 1800



Online

Email: info@silver-peak.com
Website: www.silver-peak.com

© 2019 Silver Peak Systems, Inc. All rights reserved. Silver Peak, the Silver Peak logo, and all Silver Peak product names, logos, and brands are trademarks or registered trademarks of Silver Peak Systems, Inc. in the United States and/or other countries. All other product names, logos, and brands are property of their respective owners.

SP-DS-ENT-UNITY-ORCHESTRATOR-040919