



Training Overview

About Silver Peak Training

Silver Peak offers both instructor-led and self-paced online training. **All training is provided free of charge.**

All **Instructor-led courses** can be attended remotely via web conferencing tools like WebEx or Skype for Business (depending on the class), or in-person at Silver Peak headquarters.

- > Instructor-led classes are currently delivered in US, EMEA and APAC time zones. See the schedule at <https://www.silver-peak.com/support/training>.
- > All hands-on labs are available to both remote and in-person students via our cloud based facilities accessed over the Internet.

- > Instructor-led courses are also available in self-paced online versions, and include the same lecture materials delivered in class, and many include the same hands-on labs. **All instructor-led training is free of charge to Silver Peak customers and partners.**

Silver Peak self-paced online training courses cover a variety of subjects, and more are added all the time. See the catalog in the LMS (Learning Management System). See the instructions for how to access training on the next page. All self-paced training is free.

Silver Peak does not currently offer for-profit billable instructor-led training delivered at customer sites.

Descriptions of some of the most popular courses can be found later in this document.



All Instructor-led courses can be attended remotely via web conferencing tools like WebEx or Skype for Business.

How to Access Training:



Customers

- > If you are a Silver Peak customer, you can access the training site at <https://training.silver-peak.com>. If you have an account, you can log in and browse the complete catalog. (Note, as it mentions on the login screen, this account is different than your Silver Peak support account.)
- > If you're a customer and you don't have an account on the Learning Management System (LMS):
 - Click on 'Start Browsing' under the Catalog on the right.
 - Once you choose to enroll in a course, you will be prompted to self-create an account at checkout.



Partners

- > Silver Peak authorized partners that wish to enroll in training classes should access training through the Silver Peak partner portal at <https://partner.silver-peak.com/PartnerLogin>.
- > If you don't already have a partner portal account, you can request one by clicking on the Request Access link.
- > Partners accessing the Learning Management System (LMS) through the partner portal have access to additional unique partner only material that is not available to users with self-created accounts.
- > **Note:** Accessing training from the Partner Portal currently requires you to allow pop-ups in your web browser from silver-peak.com.

General Technical Certifications and Instructor-Led Training

The following includes a partial list of available Silver Peak training. We are always adding and updating training content. Refer to the Course Catalog on the Silver Peak training site for a current list of all available instructor-led and online courses. These courses are available to all audiences.

Deploying SD-WAN Technologies (DST) Training

DST is offered as instructor-led or a self-paced online course with hands on labs

- > The Deploying SD-WAN Technologies (DST) instructor-led course is packed with 13 hands-on labs over a two-day period. Each student will install and configure an SD-WAN using Unity Orchestrator™ to deploy Unity EdgeConnect™ appliances across their own individual lab network.
- > All students completing DST will be eligible to

take the Silver Peak SD-WAN Professional (SPSP) exam and earn a course certification.

Advanced SD-WAN Deployments (ASD) Training

- > ASD is offered as instructor-led or a self-paced online course.
- > The Advanced SD-WAN Deployments (ASD) training consists two days of lecture and hands-on lab exercises with the Silver Peak Orchestrator and EdgeConnect SD-WAN appliances. Hands-on lab exercises are specifically designed to give you experience with the implementation of advanced deployments, including out of path implementations using BGP, WCCP, PBR, VRRP, Silver Peak HA, and support and troubleshooting of an EdgeConnect SD-WAN. The course includes a deeper examination of traffic flow and interface behavior.

- > Students attending this course should have already completed the prerequisite DST course.
- > All students completing ASD will be eligible to take the Silver Peak SD-WAN eXpert (SPSX) exam and earn a course certification.

Additional Silver Peak Self-Paced Training and Certification

Silver Peak has additional self-paced training courses available. A partial listing of current offerings include:

- > Deploying an EdgeConnect Appliance in AWS

- > Deploying an EdgeConnect Appliance in Microsoft Azure
- > Deploying SaaS Optimization
- > Deploying SD-WAN Technologies - DST (Self-Paced - Version 7.3 SW) w/ hands-on labs
- > Using Silver Peak REST APIs

...and more available in the catalog.

Sales and Technical Sales Training and Certification

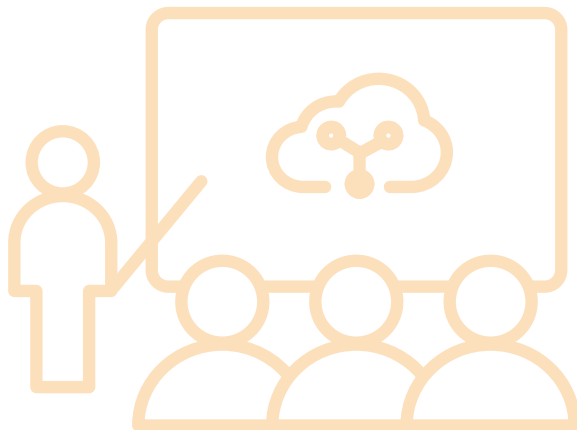
Silver Peak offers the following self-paced online training and certifications targeted at sales and technical sales personnel at Silver Peak partners. These online, self-paced courses are intended to provide a foundational knowledge of Silver Peak products and technologies for sales professionals. These courses are available exclusively to Silver Peak partners.

Silver Peak Sales Professional SD-WAN (SSP-SD-WAN)

The SSP-SD-WAN training and certification program is targeted at Silver Peak partner sales personnel. It focuses on Silver Peak SD-WAN technology and products, SD-WAN fundamentals, and provides guidance for identifying and qualifying new SD-WAN opportunities.

Silver Peak Technical Sales Professional – SDWAN (STSP-SD-WAN)

The SSP-SD-WAN training and certification program is targeted at Silver Peak partner technical sales personnel. The course covers Silver Peak SD-WAN technology, EdgeConnect appliances, and the Orchestrator management software. In addition to learning about the products, students have access to self-paced, guided labs to learn how to install, configure and deploy the Orchestrator and EdgeConnect appliances, as well as configure and test Dynamic Path Control functionality (DPC).



Quick Reference for Popular Courses

Course	Format	Target Audience			Notes
		Sales	Technical Sales/SE	Customer	
SSP-SDWAN	Online self-paced	x	x		Sales Certification
STSP-SDWAN	Online self-paced		x		Technical sales certification. Updated to 8.0 as of July 1, 2017.
DST	Instructor-led or Online self-paced		x	x	Focused on basic SD-WAN deployments (ILRM/Bridge). Based on 8.0. SPSP*, certification test offered.
ASD	Instructor-led or Online self-paced		x	x	Focused more complex deployments with traffic redirection using BGP, WCCP, PBR and VRRP. Also explores traffic flow and interface behavior in more depth. <i>Prerequisite: DST</i> SPSX** certification test offered



Company Address

Silver Peak Systems, Inc
2860 De La Cruz Blvd.
Santa Clara, CA 95050



Phone & Fax

Phone: +1 888 598 7325
Local: +1 408 935 1800



Online

Email: training@silver-peak.com
Website: www.training.silver-peak.com

© Silver Peak Systems, Inc. All rights reserved. Silver Peak, the Silver Peak logo, Unity EdgeConnect and Unity Orchestrator are trademarks or registered trademarks of Silver Peak Systems, Inc. in the United States and/or other countries. All other marks may be trademarks of their respective owners.

SP-TR-ABOUT-070118