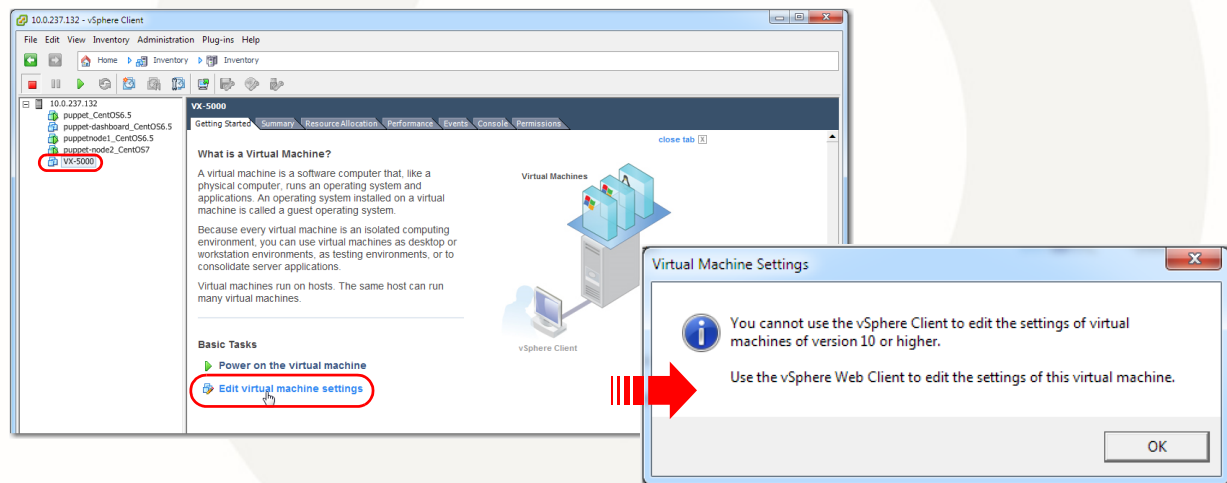


## Downgrading the Virtual Machine Hardware Version from 10 to 9 in ESXi 5.5

How do you know if you need to use this document?

If you've logged into the vSphere client, selected the virtual machine and clicked **Edit virtual machine settings**, and you get this **Virtual Machine Settings** pop-up:



The Silver Peak OVF template **does not** contain the virtual machine hardware version number. The intention has been to let the ESXi hypervisor select the highest hardware version that it can support.

However, when ESXi 5.5 introduced hardware version 10, the user could no longer edit the VM's settings with the vSphere client. Instead, hardware version 10 required the installation of vCenter, with its newer vSphere **web** client, to accomplish the same task.

This document describes an unsupported way to downgrade the hardware version of a deployed virtual machine, enabling the user to edit settings with ESXi 5.5 alone.

**CAUTION: This is an unsupported way to downgrade the VM hardware version.**

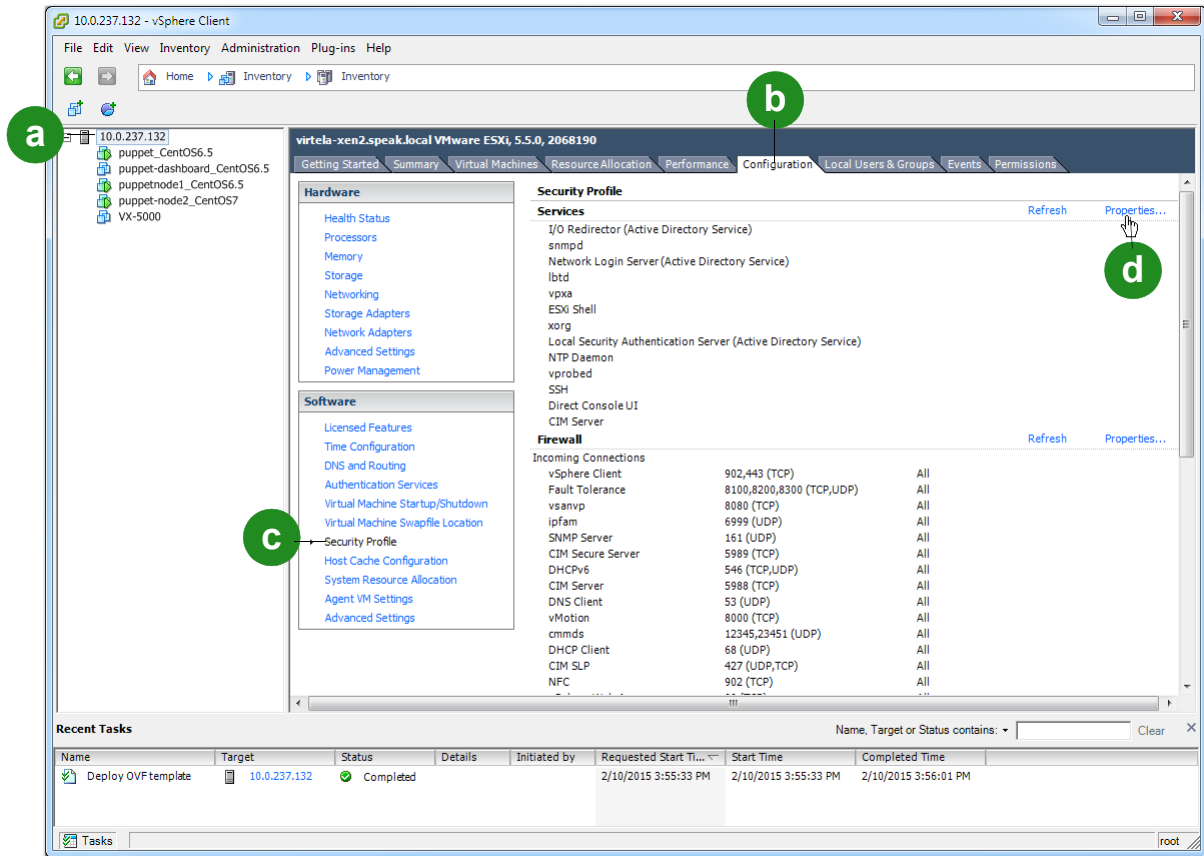
### Summary of Steps

- 1 If they aren't already running, start the SSH and ESXi Shell services on the ESXi host.
- 2 Establish an SSH connection to the ESXi host.
- 3 Locate the Silver Peak virtual appliance's **.vmx** file.
- 4 Edit the hardware version number in the **.vmx** file.
- 5 Remove the virtual appliance from inventory.
- 6 Add the virtual appliance back into the inventory.
- 7 Edit the virtual machine settings.

## I If they aren't already running, start the SSH and ESXi Shell services on the ESXi host

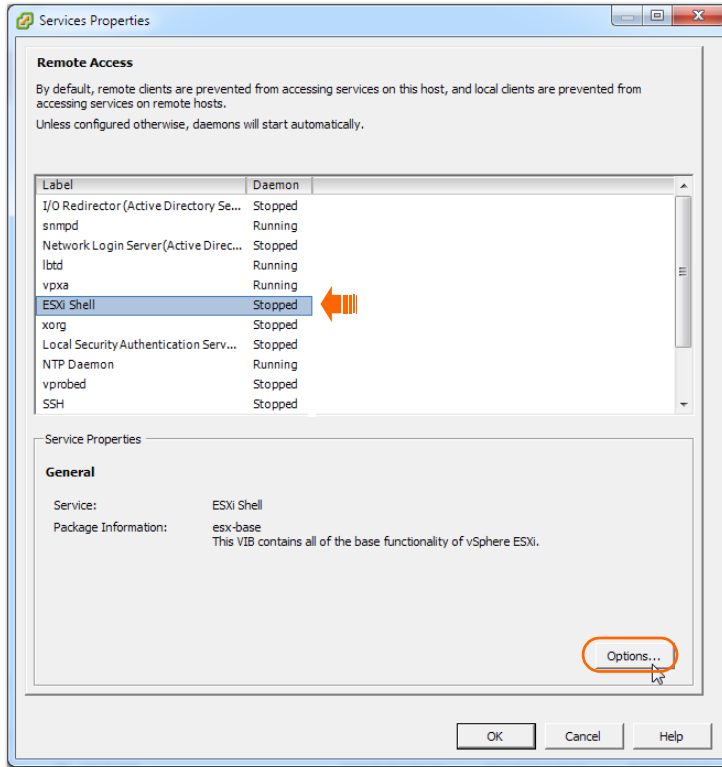
These shell daemons are located within the security profile of the ESXi host.

To access the profile:

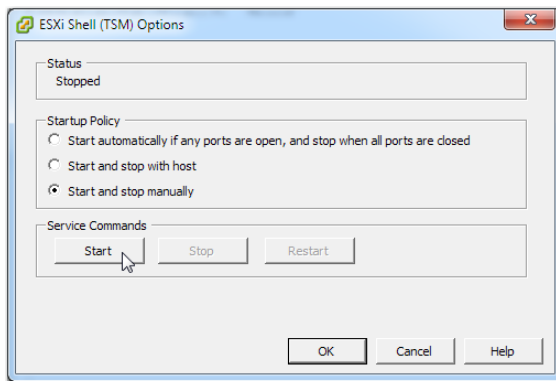


- In the navigation window, select the virtual machine's ESXi host.
- Click the **Configuration** tab.
- Click **Security Profile**.

- d Click **Properties**. The **Service Properties** window appears.

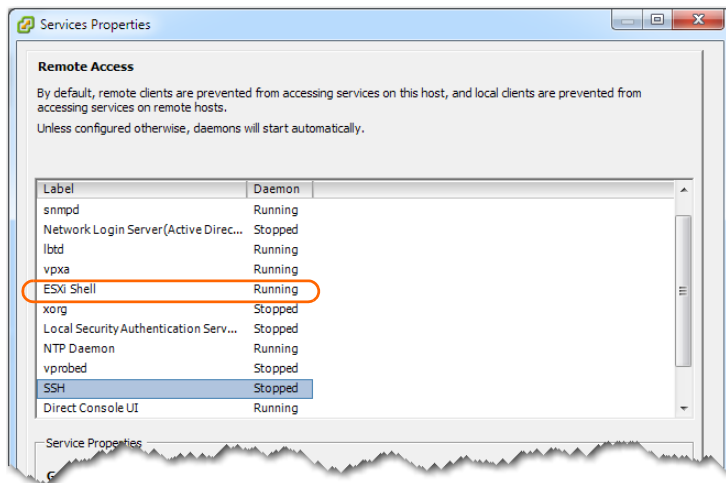


- e If the **ESXi Shell** daemon is **Stopped**, click **Options**. The **ESXi Shell (TSM) Options** pop-up appears.



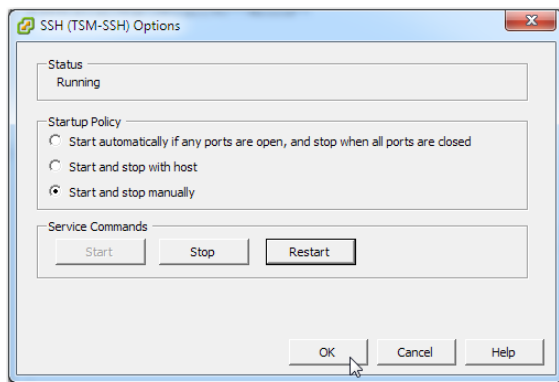
- f Select **Start and stop manually**, click **Start**, and then click **OK**.

The **Service Properties** window reappears, and shows that **ESXi Shell** is running.



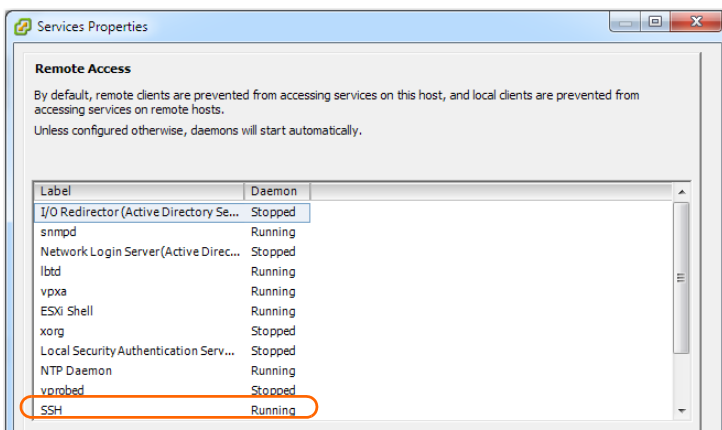
- g If the **SSH** daemon is **Stopped**, click **Options**.

The **SSH Shell (TSM-SSH) Options** pop-up appears.



- h Select **Start and stop manually**, click **Start**, and then click **OK**.

The **Service Properties** window reappears, and shows that **SSH** is running.



---

## 2 Establish an SSH connection to the ESXi host

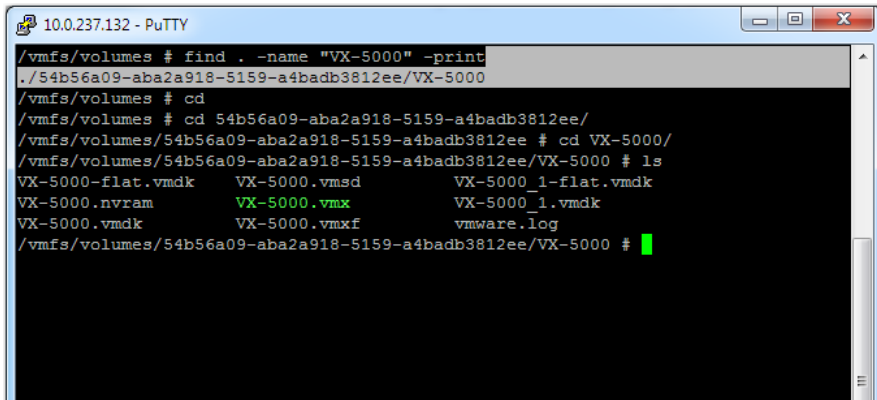
- a Make sure the VX is powered off.
- b Use putty or a similar SSH client to establish a connection to the ESXi host.

## 3 Locate the Silver Peak virtual machine's .vmx file.

You can use this command sequence to locate the .vmx file:

```
[vx appliance] # cd/vmfs/volumes [ENTER]
[vx appliance] /vmfs/volumes # find . -name <name of the vx> -print [ENTER]
(For example, <name of the vx> could be "VX-5000".)
[vx appliance] /vmfs/volumes # cd <directory from "find" above command> [ENTER]
[vx appliance] /vmfs/volumes/<directory> # ls [ENTER]
[vx appliance] /vmfs/volumes/<directory> # vi <*.vmx file> [ENTER]
```

For example:



```
10.0.237.132 - PuTTY
/vmfs/volumes # find . -name "VX-5000" -print
./54b56a09-aba2a918-5159-a4badb3812ee/VX-5000
/vmfs/volumes # cd
/vmfs/volumes # cd 54b56a09-aba2a918-5159-a4badb3812ee/
/vmfs/volumes/54b56a09-aba2a918-5159-a4badb3812ee # cd VX-5000/
/vmfs/volumes/54b56a09-aba2a918-5159-a4badb3812ee/VX-5000 # ls
VX-5000-flat.vmdk   VX-5000.vmsd       VX-5000_1-flat.vmdk
VX-5000.nvram      VX-5000.vmx        VX-5000_1.vmdk
VX-5000.vmdk       VX-5000.vmx.f      vmware.log
/vmfs/volumes/54b56a09-aba2a918-5159-a4badb3812ee/VX-5000 # █
```

## 4 Edit the Hardware version number in the .vmx file

- a Using **vi** or a comparable program, edit the Silver Peak .vmx file to change the **virtualHW.version** from **10** to **9**:

Original: virtualHW.version = "10"

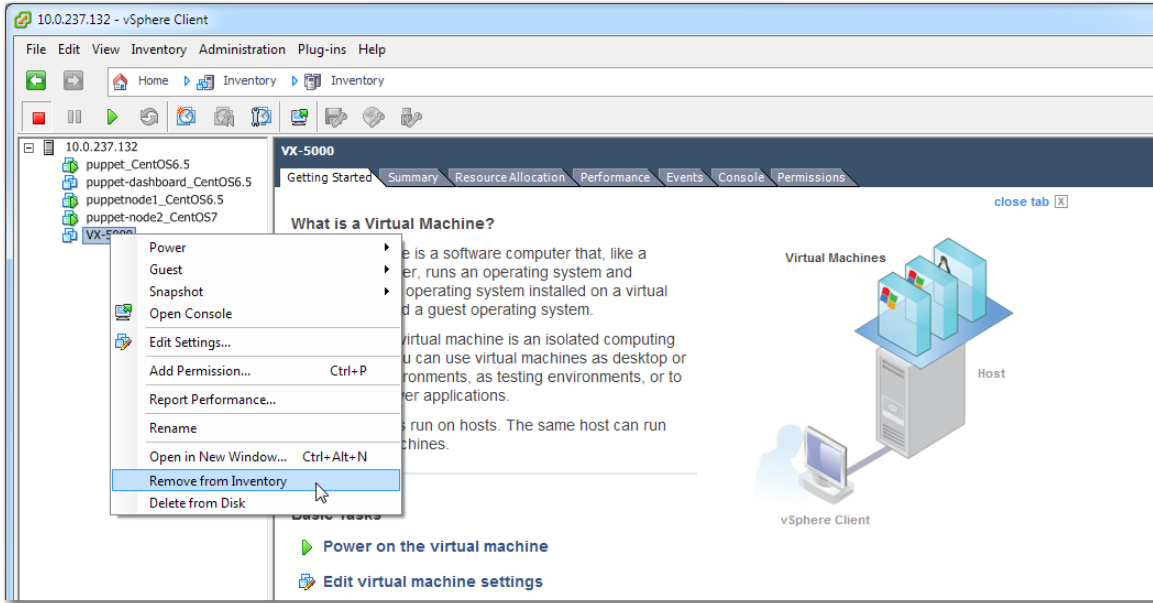
New: virtualHW.version = "9"

- b Save the change and exit **vi**.

## 5 Remove the virtual appliance from inventory

- a From the vSphere client, select the Silver Peak appliance.

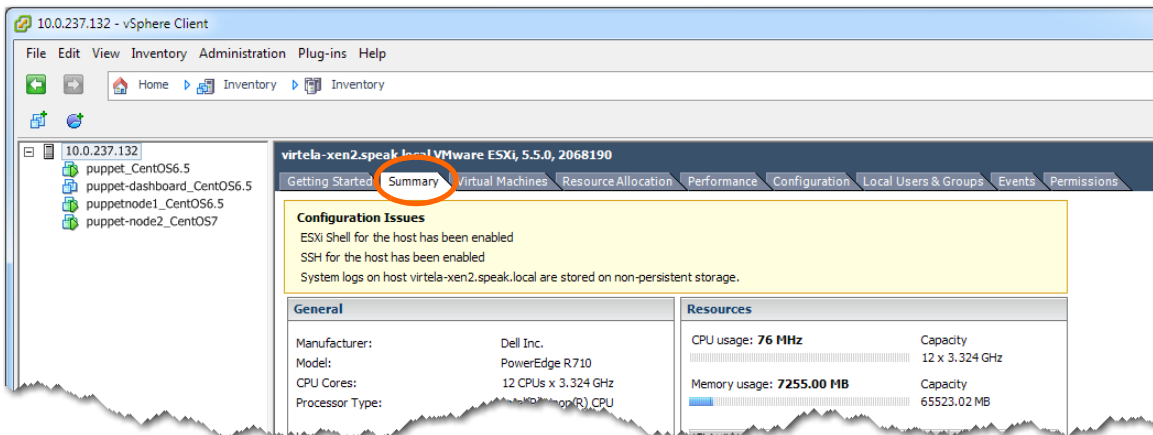
- b Right-click and select **Remove from Inventory**.



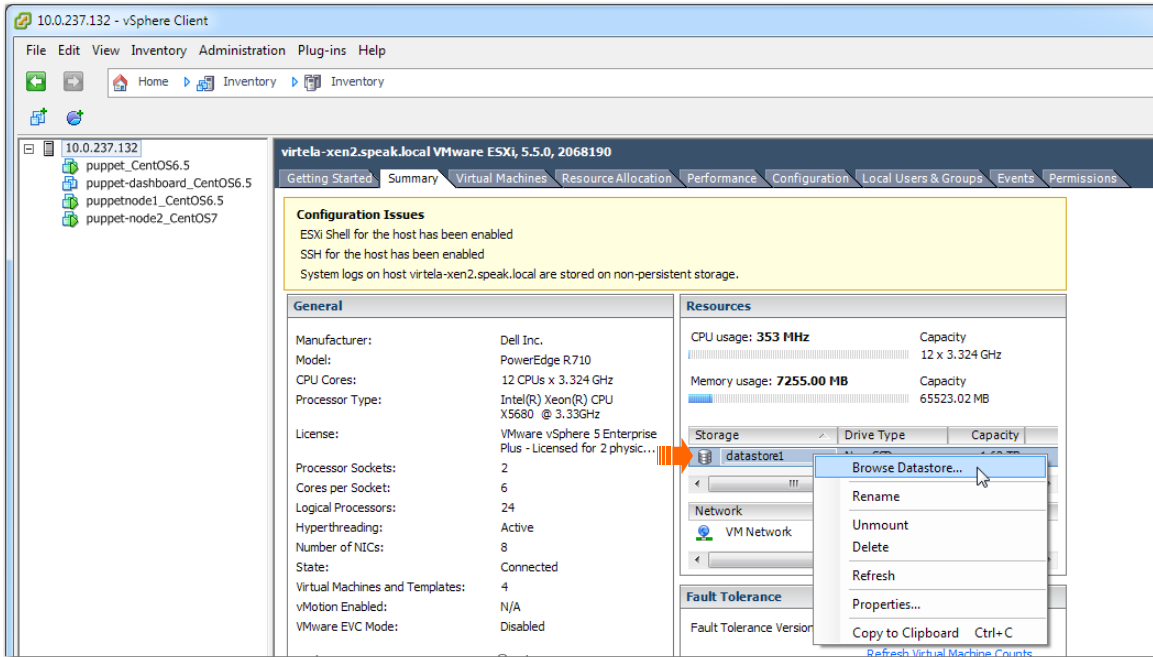
- c When asked, confirm your selection.

## 6 Add the virtual appliance back into the inventory

- a Select the ESXi host.  
b Click the **Summary** tab.

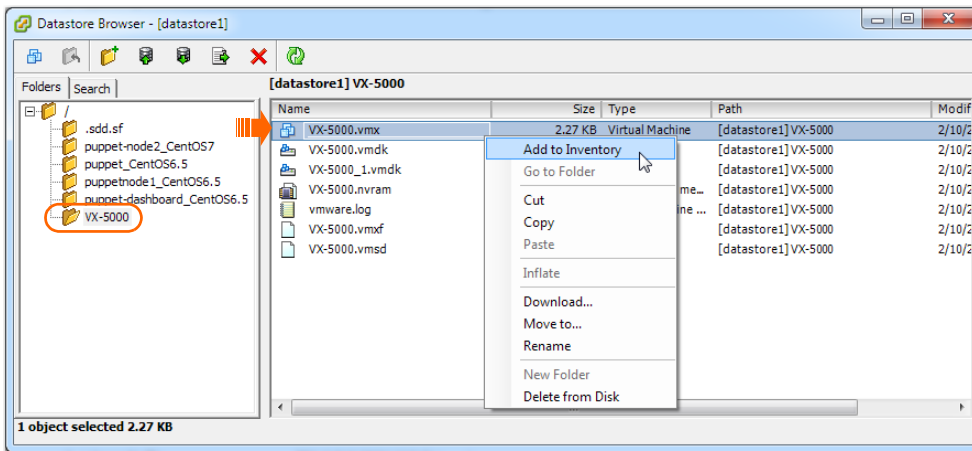


- c Select the datastore associated with the ESXi host and right-click to select **Browse Datastore**.

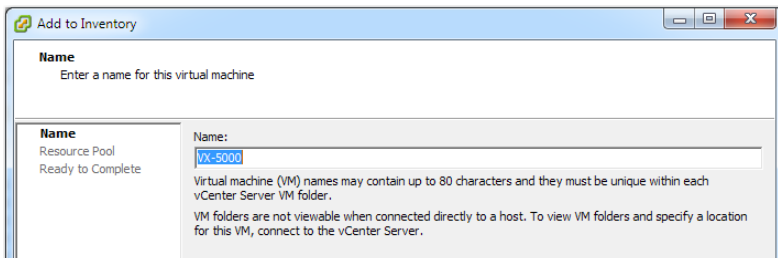


The **Datastore Browser** appears.

- d After selecting the VX, choose the **.vmx** file and right-click to select **Add to Inventory**.

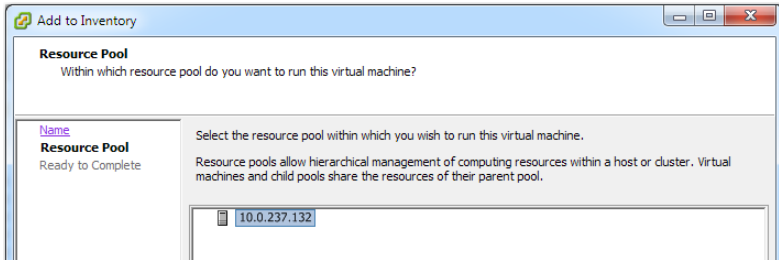


- e Enter the name of the virtual machine.



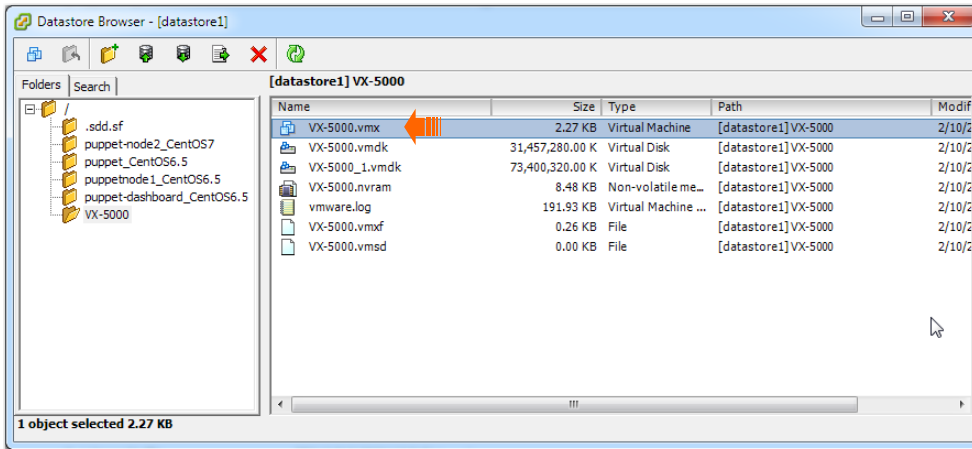
- f Click **Next**.

- g Select the resource pool — the VX's previous host.



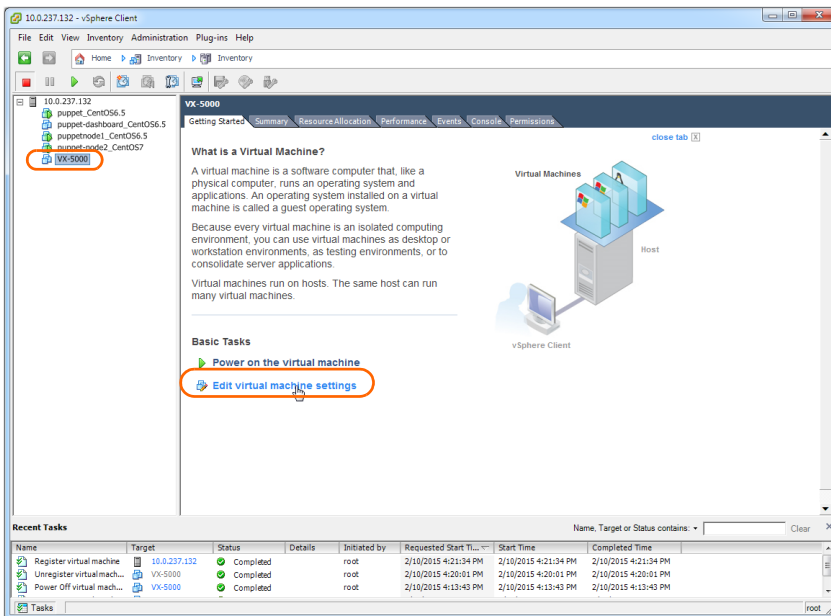
- h Click **Next**.

- i On the **Read to Complete** page, select **Finish**.  
The **Datastore Browser** appears, showing the **.vmx** file back in the datastore.



## 7 Edit the virtual machine settings

- a In the vSphere client, select the virtual appliance, and click **Edit virtual machine settings**.





- b When the **Virtual Machine Properties** page appears, edit the settings as directed by the relevant *Silver Peak Quick Start Guide*.

