

How to Expand Disk Space on Orchestrator (GXV) with the GParted Utility

Warning: There is a risk that this procedure could corrupt the GXV's disk image. Always backup --- either do a GMS backup, clone the GXV, or backup GXV's disk image. Then, if anything goes wrong, you can restore the backup to the disk.

Introduction

These steps are for the below VMware Orchestrator OVA versions only;

8.8.5.40055 + onwards

8.9.1.40089 + onwards

8.9.2.40057 + onwards

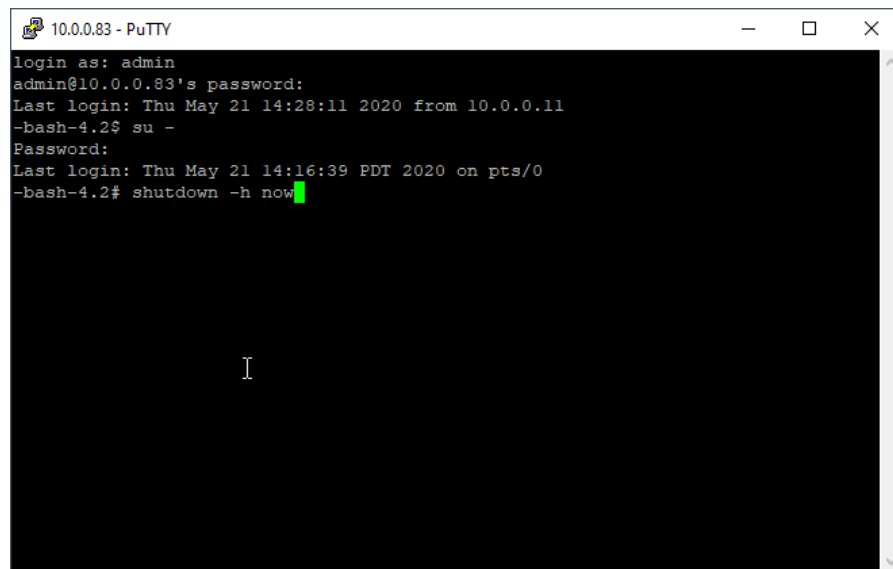
The steps and tasks are similar for the vSphere web client and other hypervisors. The significant difference is knowing how to attach the relevant image (ISO, vhd, or qcow) to the VM's CD-ROM drive.

Don't be intimidated by the number of steps. They might look complicated, but the majority are preparation tasks.

Steps

1. Download the current version of GParted ISO image [here](#). It's preferable to use the 64-bit version, *gparted-live-<version>-amd64.iso*.

2. Establish ssh or console session to GXV, login as user admin, then elevate to super user privileges (*su -*) and gracefully shutdown (*shutdown -h now*)

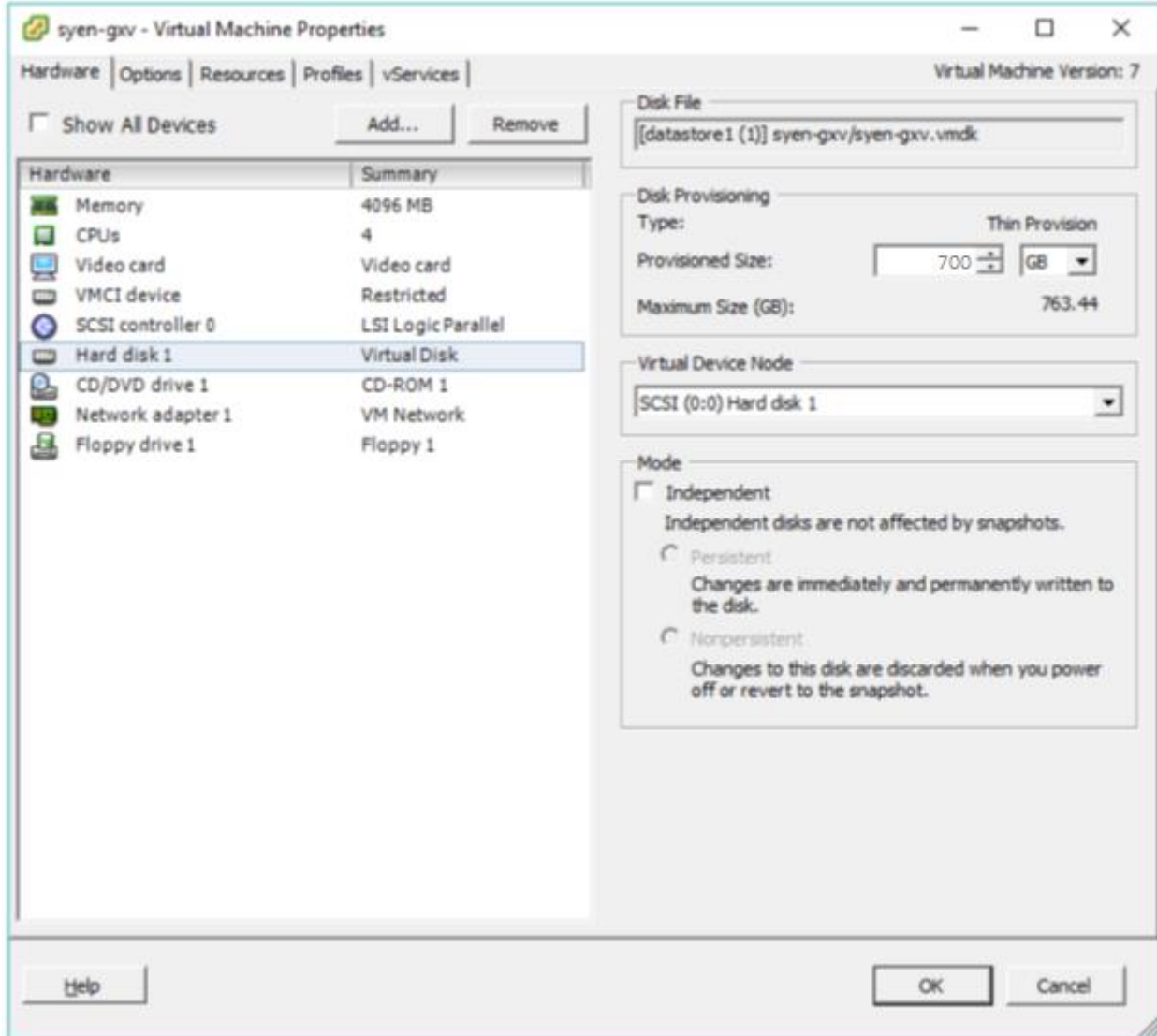


```
10.0.0.83 - PuTTY
login as: admin
admin@10.0.0.83's password:
Last login: Thu May 21 14:28:11 2020 from 10.0.0.11
-bash-4.2$ su -
Password:
Last login: Thu May 21 14:16:39 PDT 2020 on pts/0
-bash-4.2# shutdown -h now
```

3. In the vSphere client's navigation window, select **GXV VM**. In the main window, click **Edit virtual machine settings**. The Virtual Machine Properties property sheet appears.

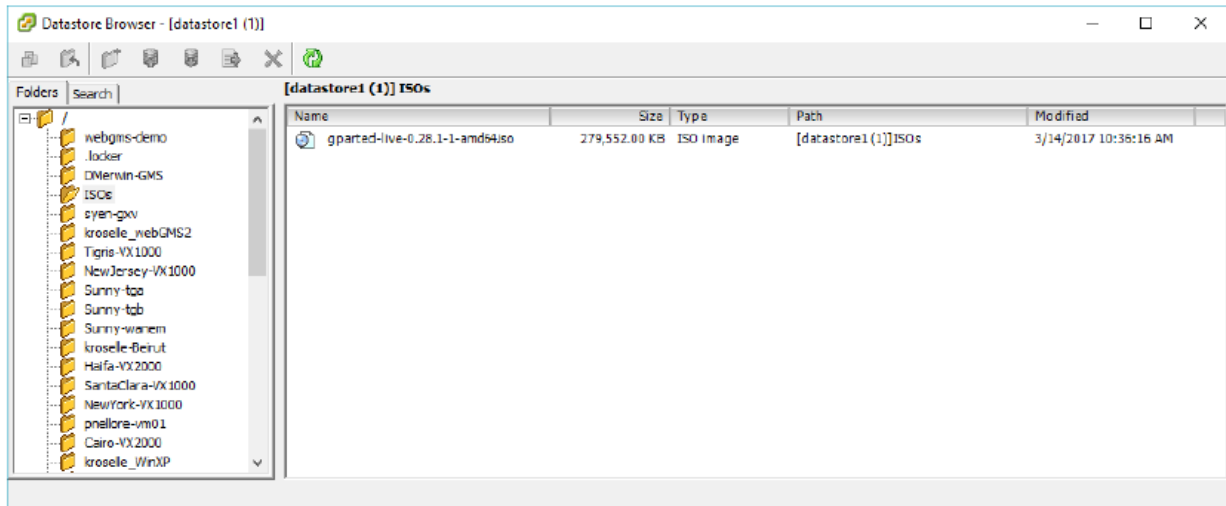
Now, you'll edit the virtual machine settings.

4. In the **Hardware** tab, select GXV's hard disk and increase its Provisioned Size as desired. In this example, we increased from 500GB to 700GB.

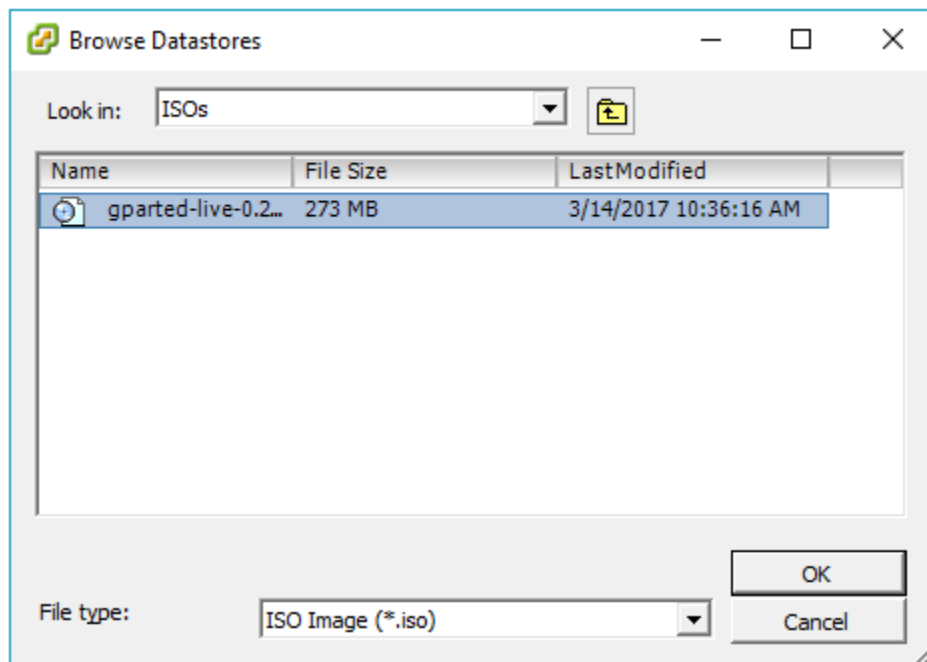


Click OK. And power up the GXV virtual machine

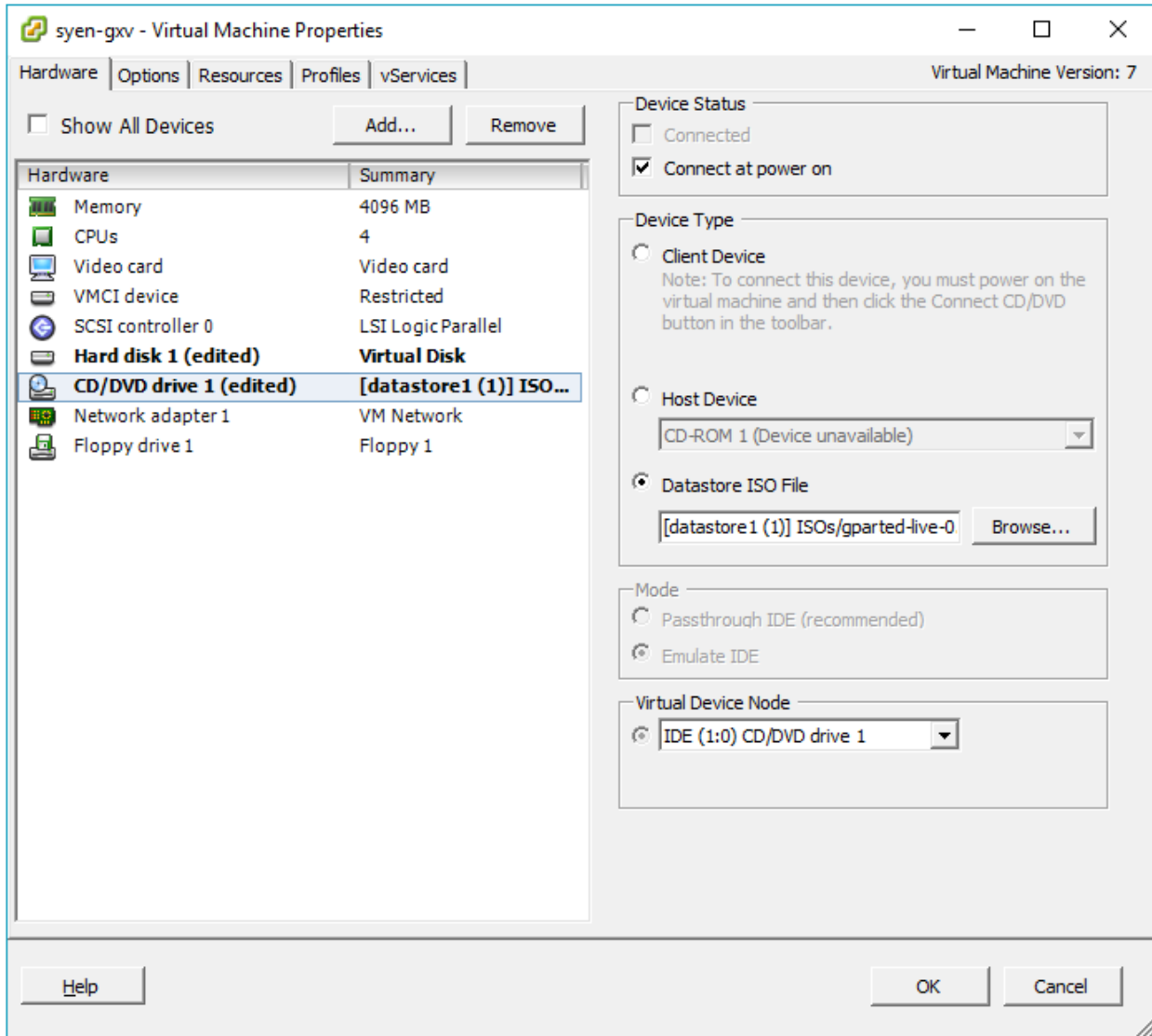
5. Upload the gparted ISO image to GXV's hypervisor Datastore. You'll retrieve it in a later step.



6. In the vsphere client GXV's VM **Hardware** tab, select **CD/DVD drive** and attach GParted ISO image you uploaded to Datastore to the drive.

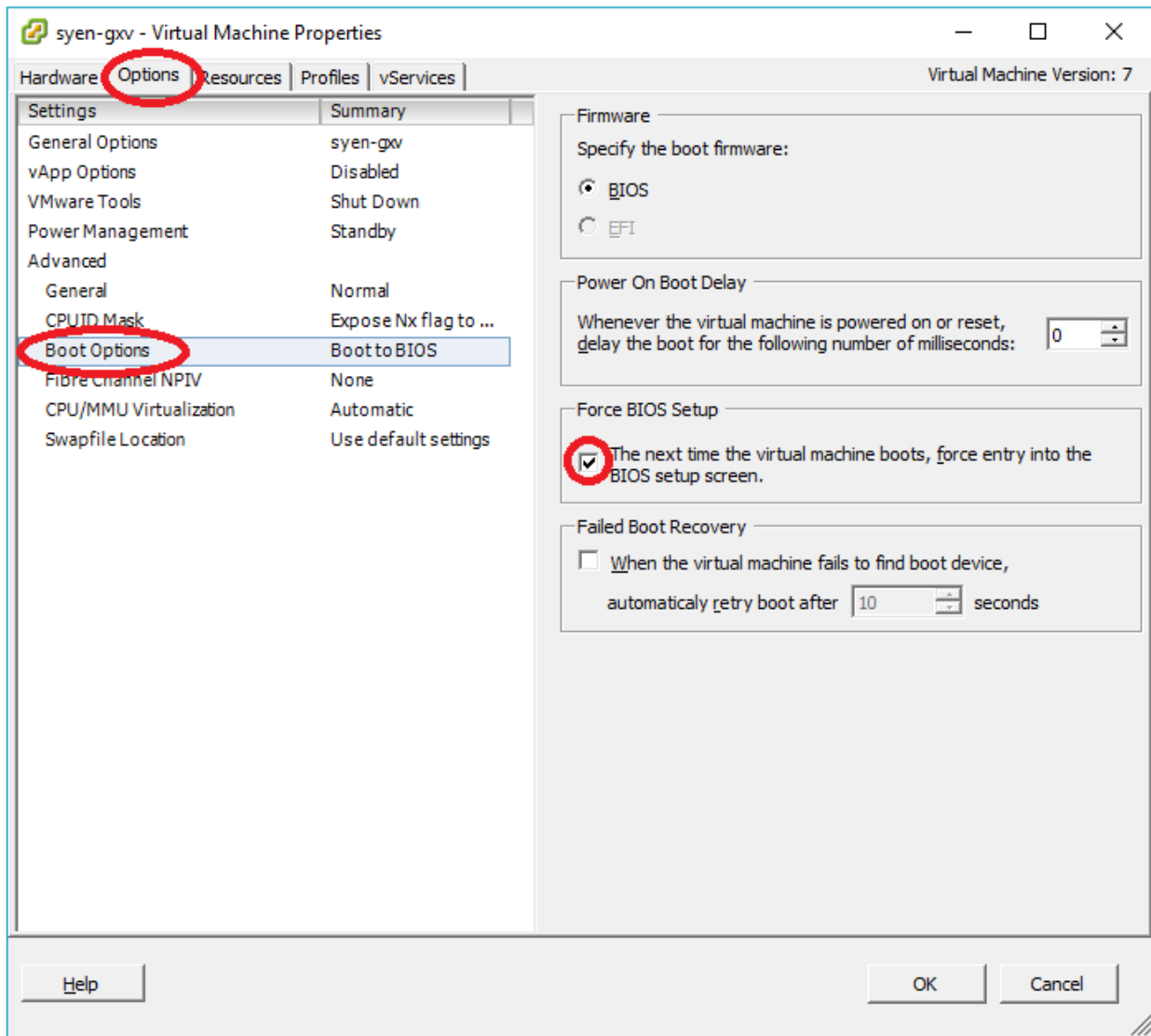


Select **Connect at power on** and click **OK**.



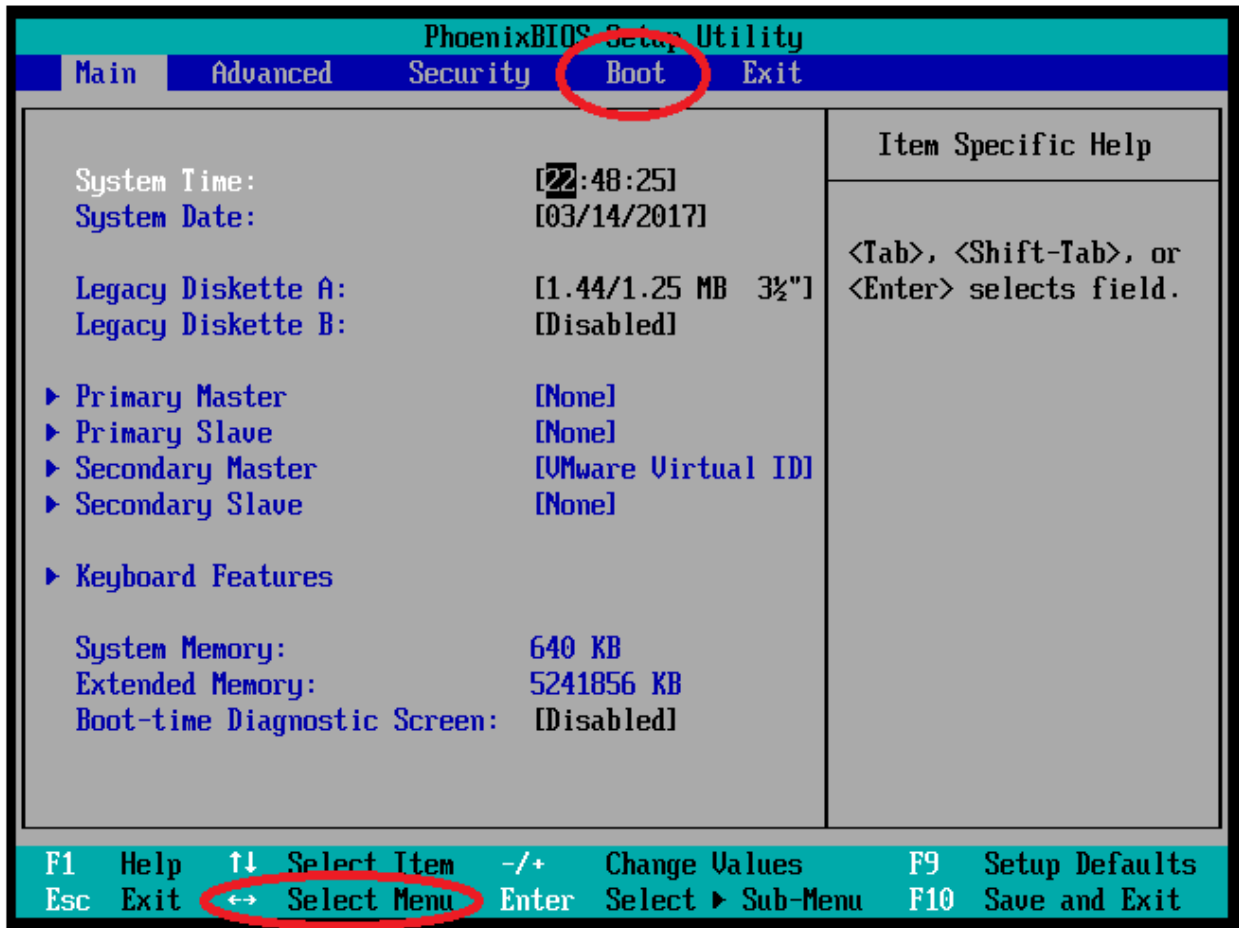
How to Expand Disk Space on Orchestrator (GXV, 8.8.5+, 8.9.1+, 8.10+ , etc) with the GParted Utility

7. To ensure that GXV boots from CDROM, we'll force the boot up to access the BIOS setting. In the **Options** tab, and select **Advanced > Boot Options > Force BIOS Setup** in next boot.

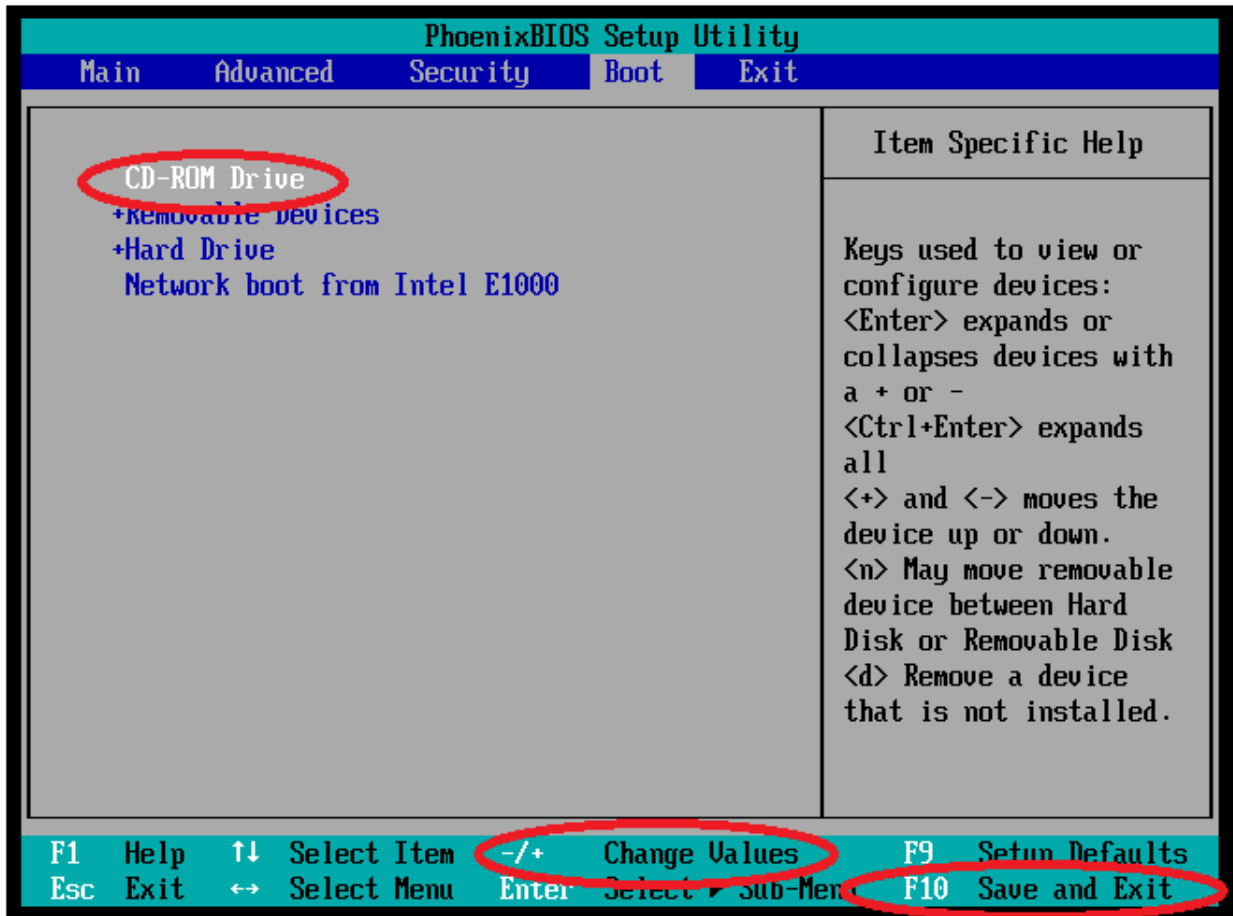


8. Click **OK** and power on the GXV.

9. Select the **Console** tab. You should see the BIOS screen there.

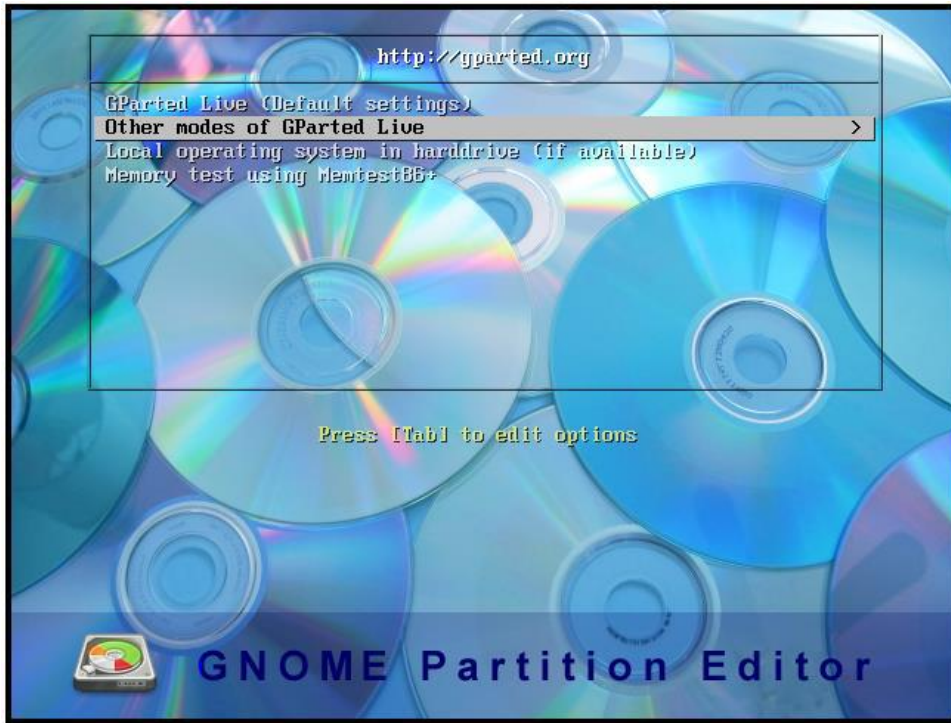


10. Use the right arrow to select the **Boot** menu and move **CDROM** to the top of the list if it isn't already.

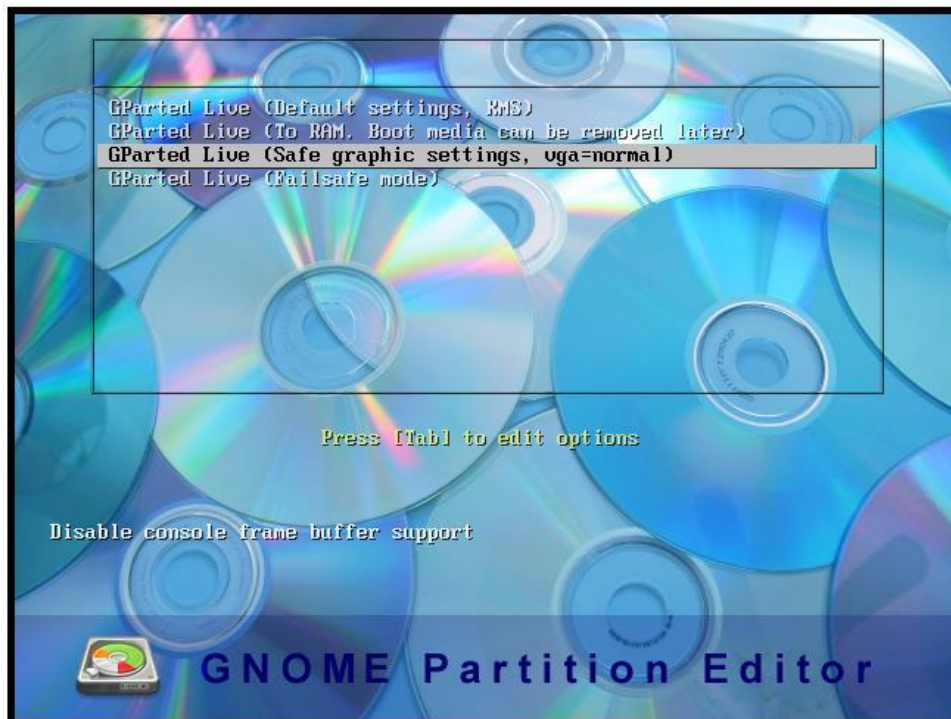


11. Press **F10** to **Save and Exit**, and confirm setup confirmation. The system reboots, and the GNOME Partition Editor appears.

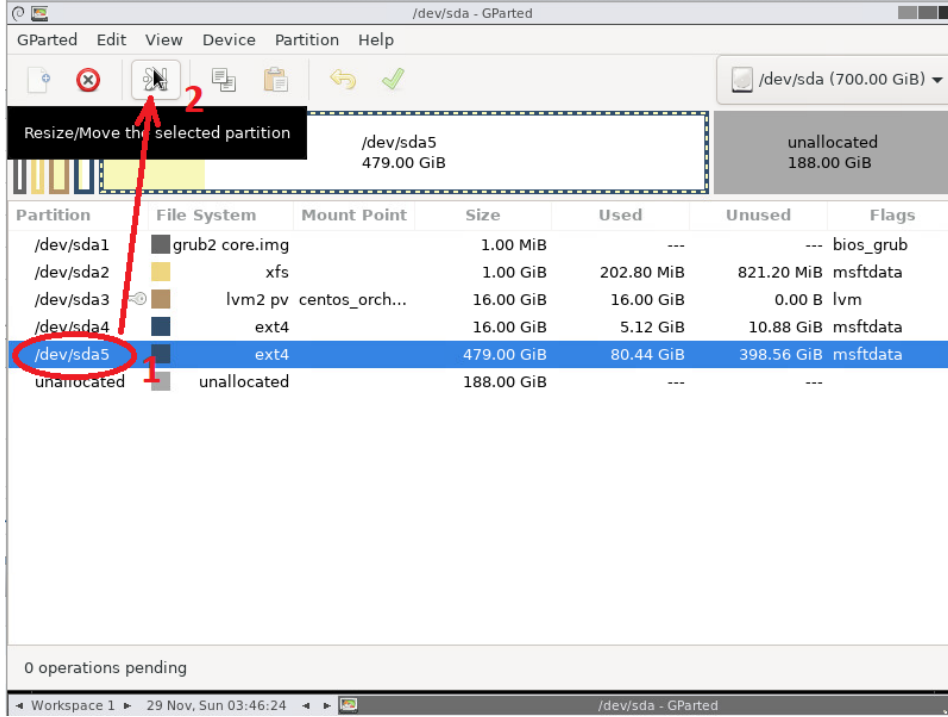
12. To be on the safe side, select **Other modes of GParted Live**.



13. Then select **Gparted Live (Safe graphic settings, vga=normal)** and press Enter.

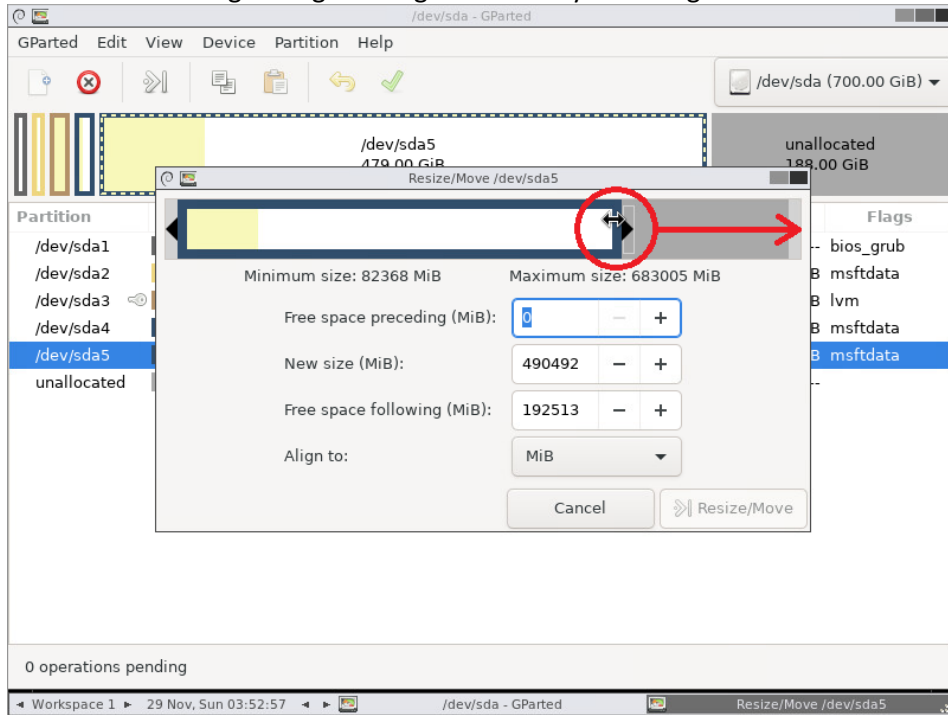


14. Expand the sda5 partition to the right. In the table, select the (/dev/sda5) partition.
 - a. Click **Re-Size/Move** button in the toolbar.

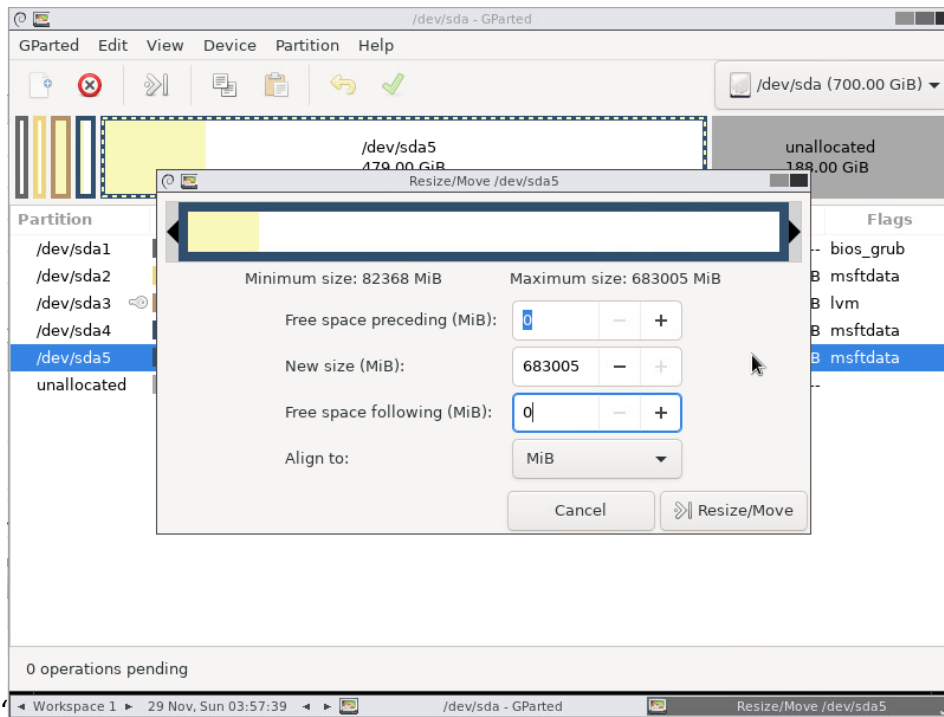


How to Expand Disk Space on Orchestrator (GXV, 8.8.5+, 8.9.1+, 8.10+ , etc) with the GParted Utility

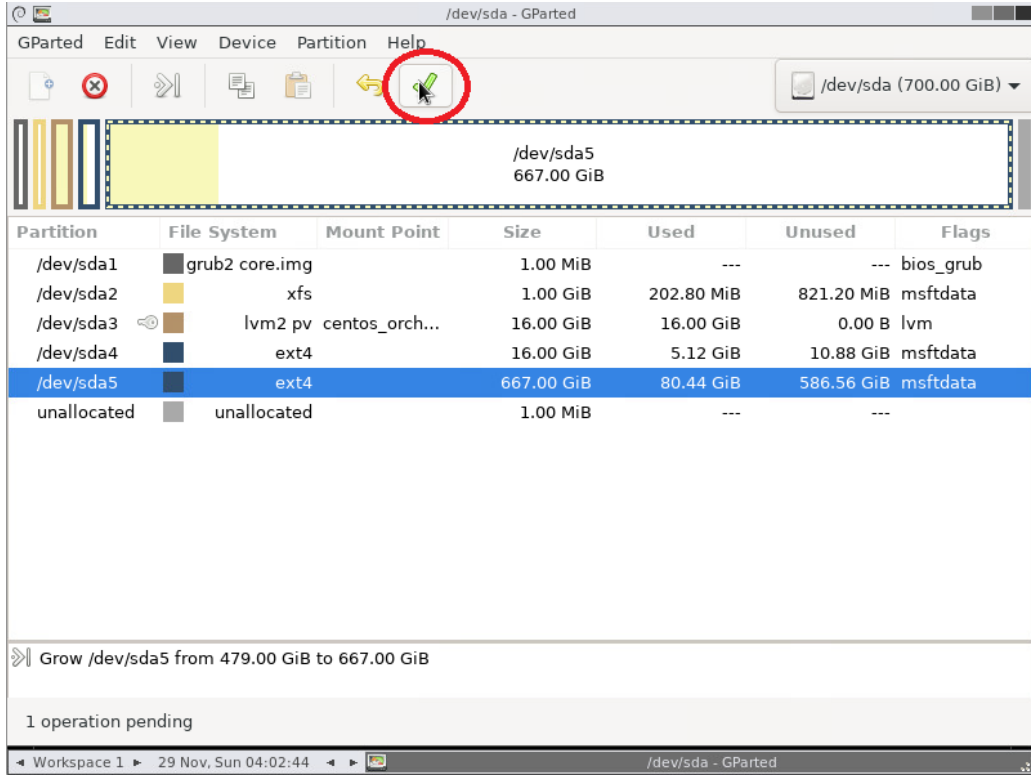
b. Drag the right triangle all the way to the right side



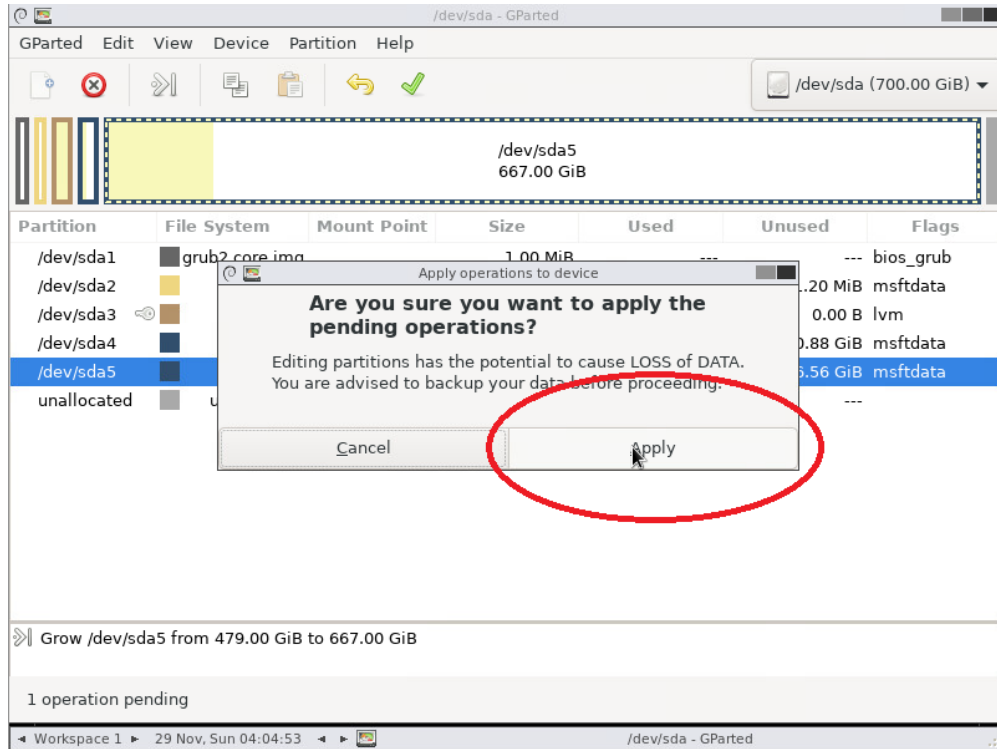
the 'Free space following will become 0', click the '>| Resize/Move' button



15. Commit actions to disk, the expansion of sda5 partition,
 - a. click on the Apply all operations button

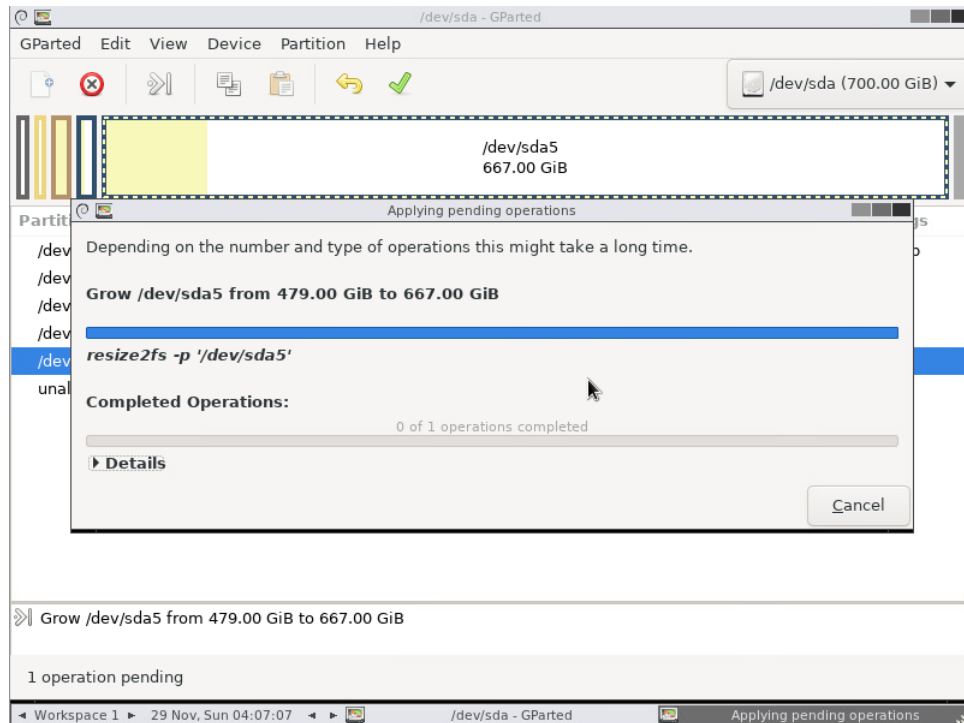


How to Expand Disk Space on Orchestrator (GXV, 8.8.5+, 8.9.1+, 8.10+ , etc) with the GParted Utility

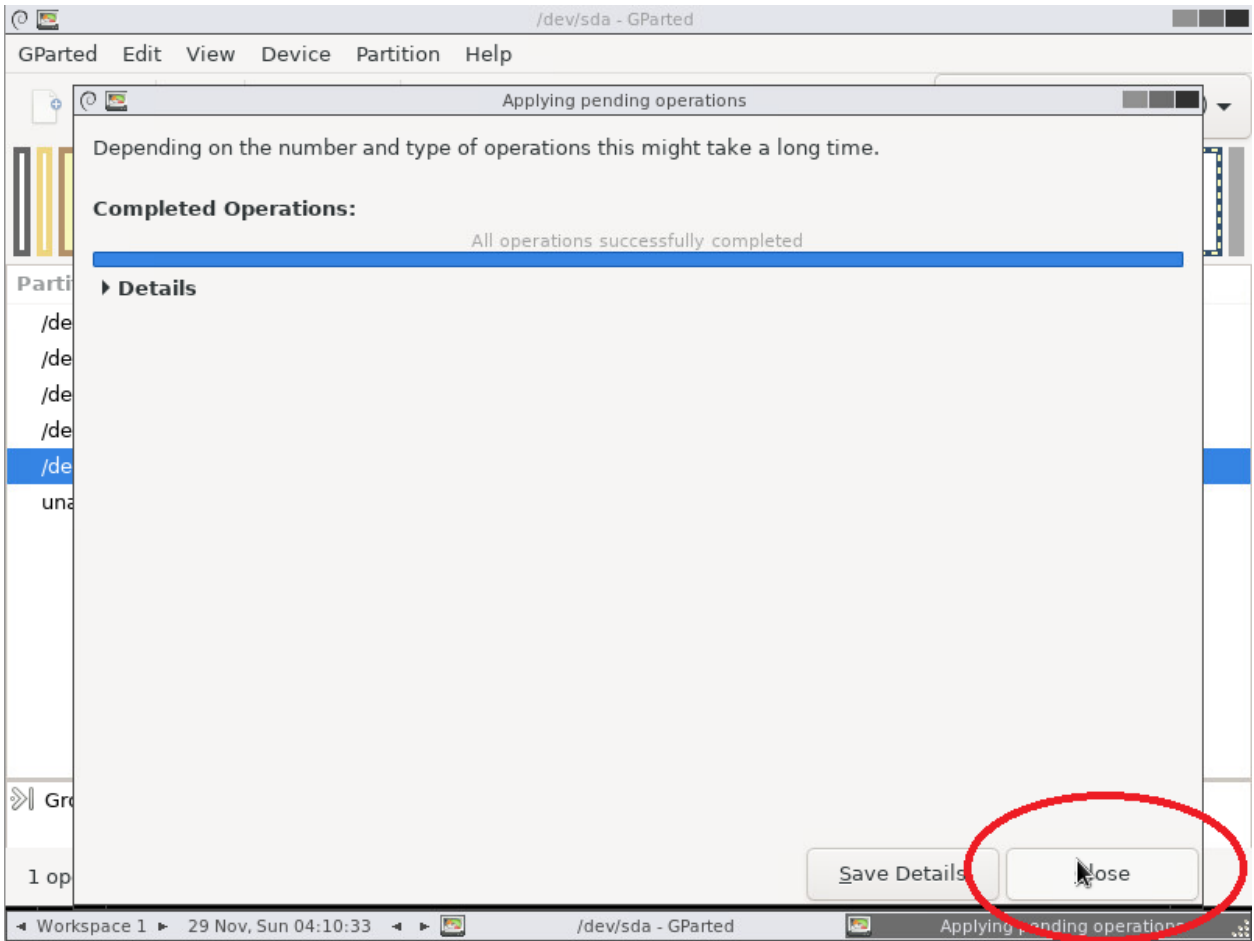


Times to expand the sda5 partition will vary on many factors, host vCPU, RAM, Disk I/O performance in particular, and the volume of data to move.

A progress indicator is given for the operations.



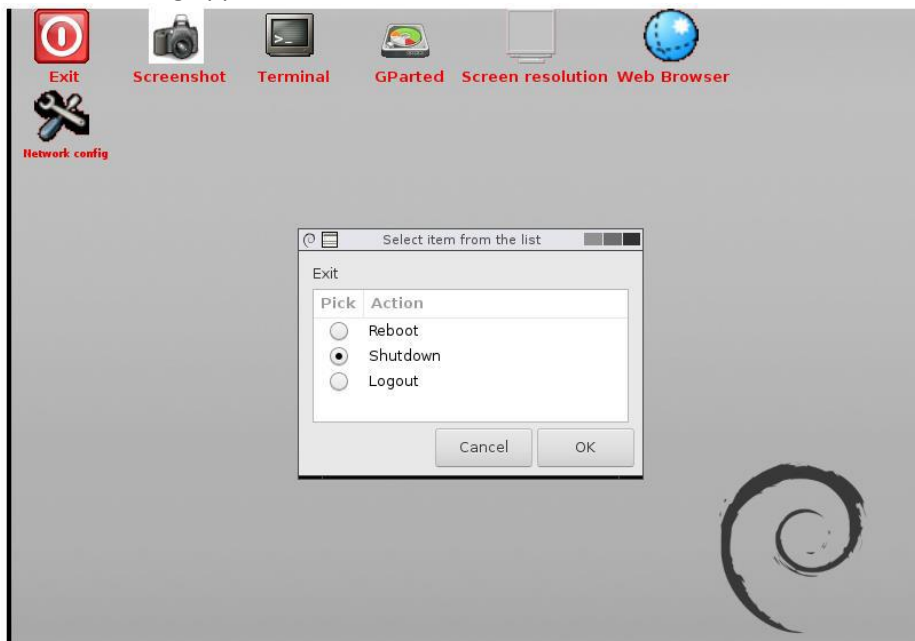
16. Click **Close**. GParted displays the newly resized partition layout.



17. Quit the GParted application (menu item **GParted > Quit**). When the desktop appears, double click the red **Exit** icon.



18. When the exit dialog appears, select **Shutdown** and click **OK** to shut down the VM.



The following message appears: **Please remove the live-medium, close the tray (if any) and press ENTER to continue.** So, just press **ENTER**.

19. Now go back to the Hypervisor (vSphere client) and detach the ISO image from the GXV CDROM drive. (Otherwise, it will boot GParted when booting up.)

20. Power up GXV. You should now have more space.