

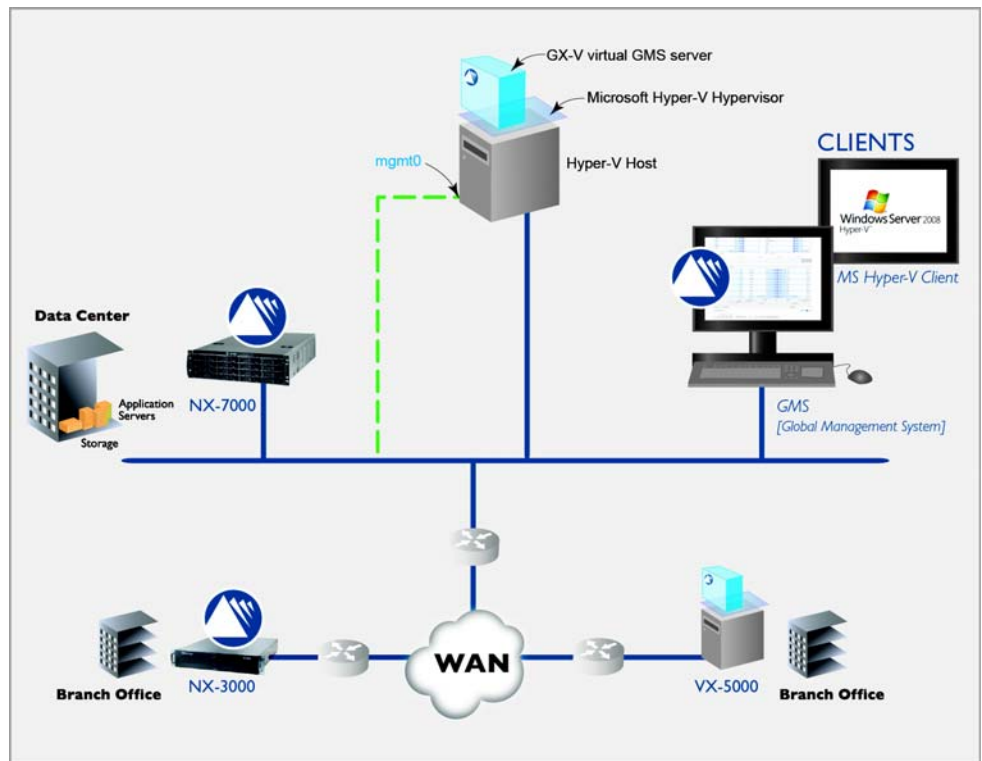
Quick Start Guide

GMS

Microsoft Hyper-V Hypervisor

© 2013 Silver Peak Systems, Inc.

If you're not using **Hyper-V 2012**, your screens may vary.



Before You Begin

- Comply with the [GMS Host System Requirements](#) [PN 20 0476-001]
- Download the zipped .VHD file for the GMS:
 - For a free trial, go to the [Silver Peak Marketplace](#).
 - If you've purchased the product, then log in at the [Silver Peak Support portal](#).
- Identify the IP address for the Hyper-V server
- Obtain a GMS activation license key

SUMMARY OF TASKS

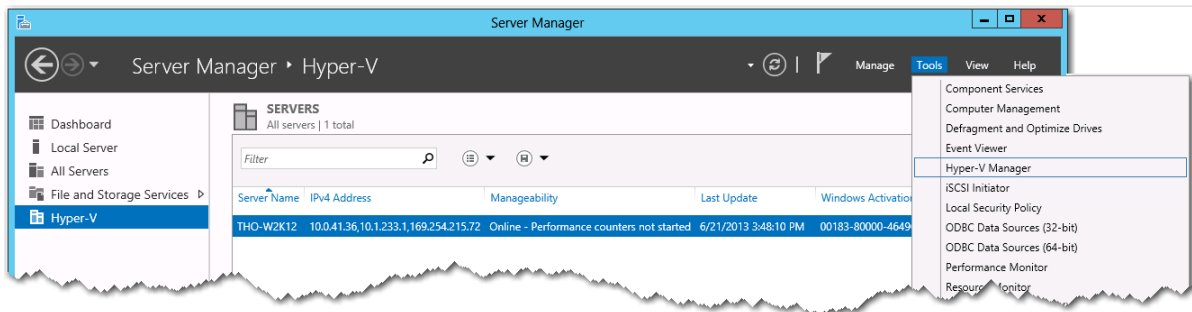
- 1** Create the virtual machine
- 2** Configure the virtual machine
- 3** Configure the virtual GMS server



Silver Peak Systems, Inc.
4500 Great America Parkway
Suite 100
Santa Clara, CA 95054

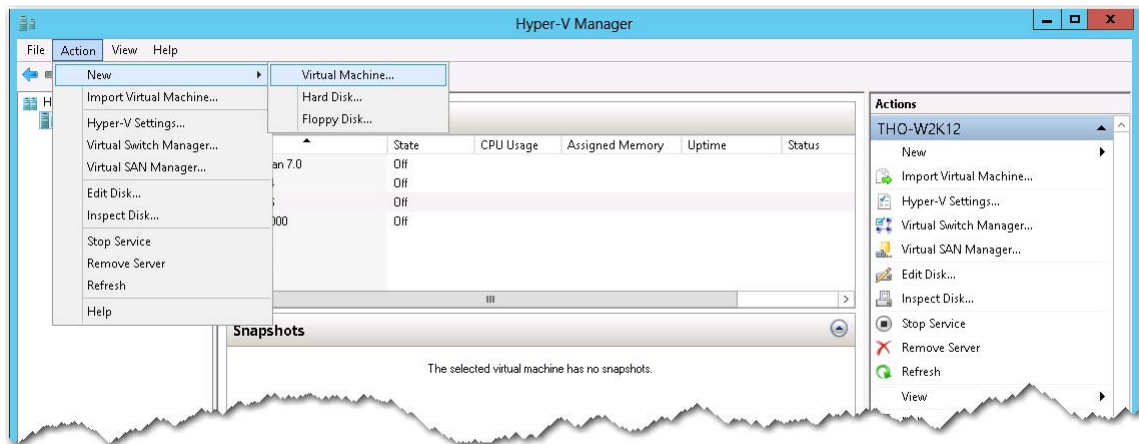
1.877.210.7325 (toll-free in USA)
+1.408.935.1850
www.silver-peak.com/support

TO BEGIN ... In Server Manager, select the target Hyper-V server and, using a right-click, launch Hyper-V Manager.

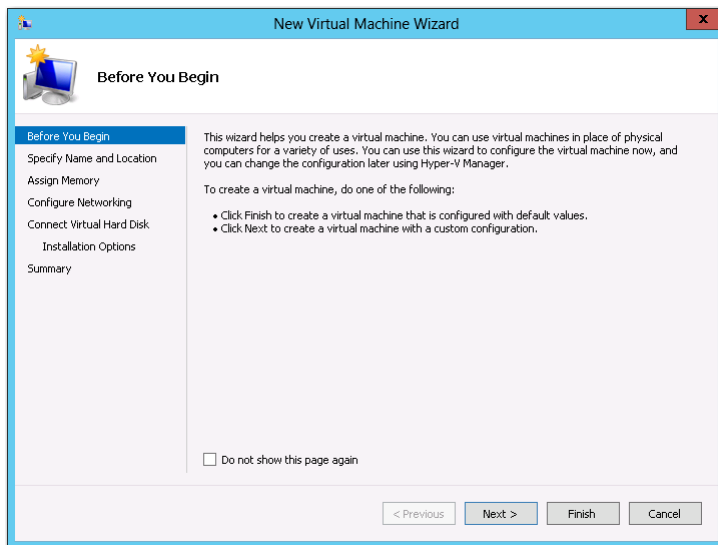


Create the virtual machine

- a. From the Server Manager menu bar, select **Action > New > Virtual Machine**.

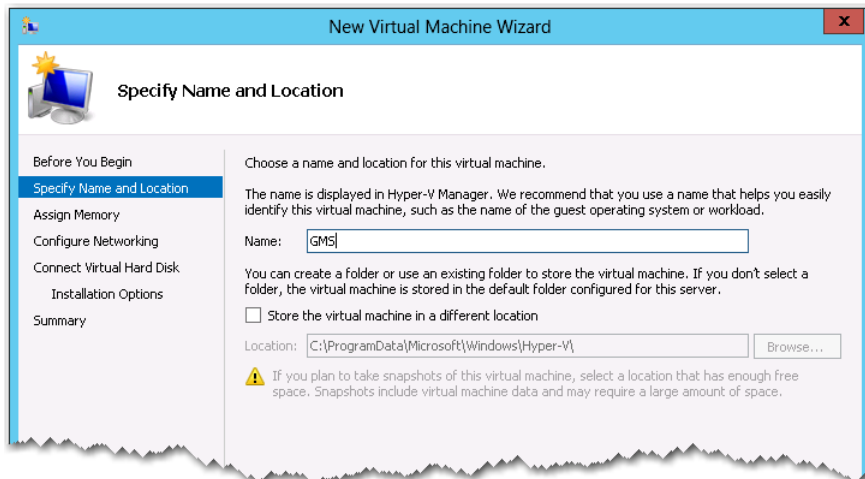


The **New Virtual Machine Wizard** opens, and the **Before You Begin** page appears.



- b. Click **Next**. The **Specify Name and Location** page appears.

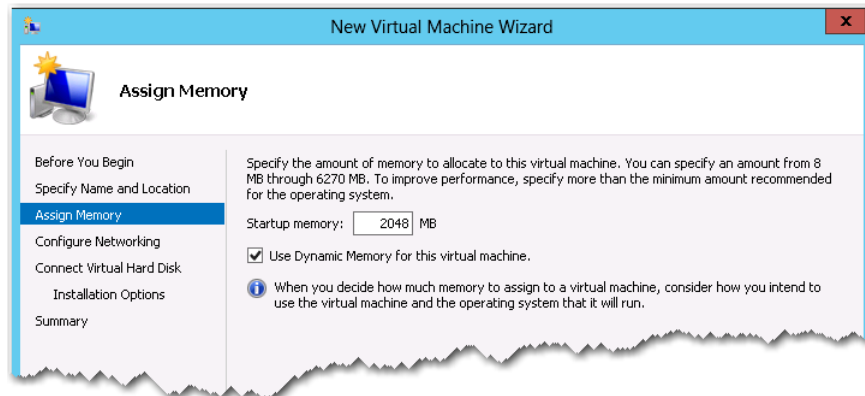
- c. In the **Name** field, enter the new virtual machine's name. In this example, we're naming the virtual machine, **GMS**.



- d. Click **Next**. The **Assign Memory** page appears.

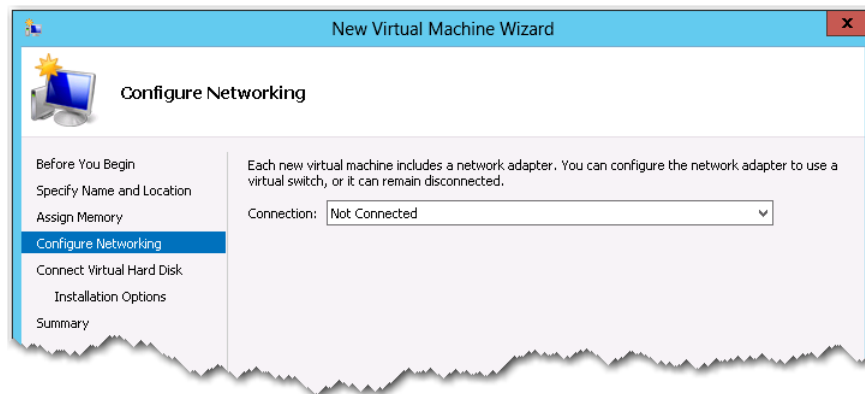
- e. In the **Memory** field, enter the default value, **2048**, and select **Use Dynamic Memory for this virtual machine**.

This value could be higher for large deployments. Refer to the *GMS Host System Requirements* document for guidance.



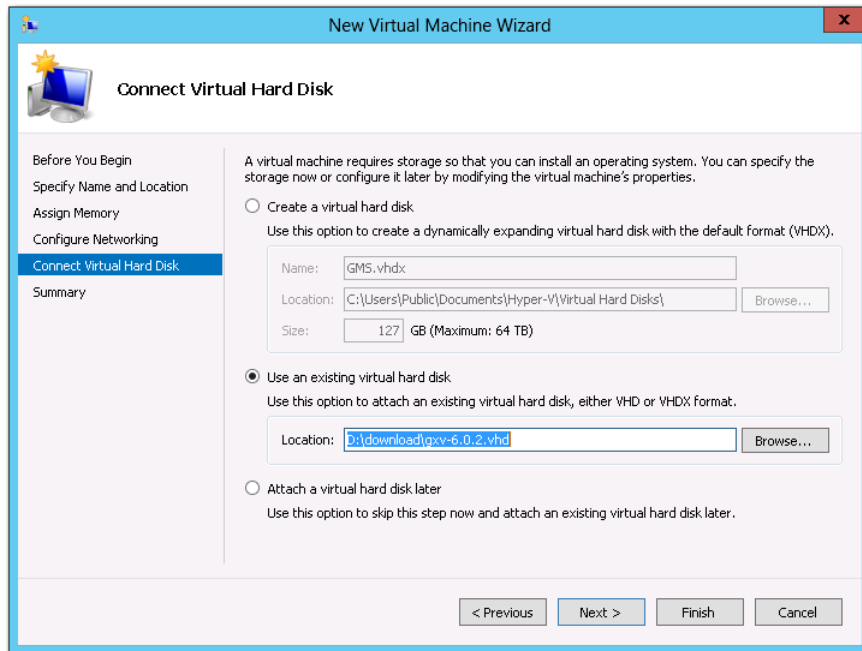
- f. Click **Next**. The **Configure Networking** screen appears.

- g. In the **Connection** field, accept the value, **Not Connected**.

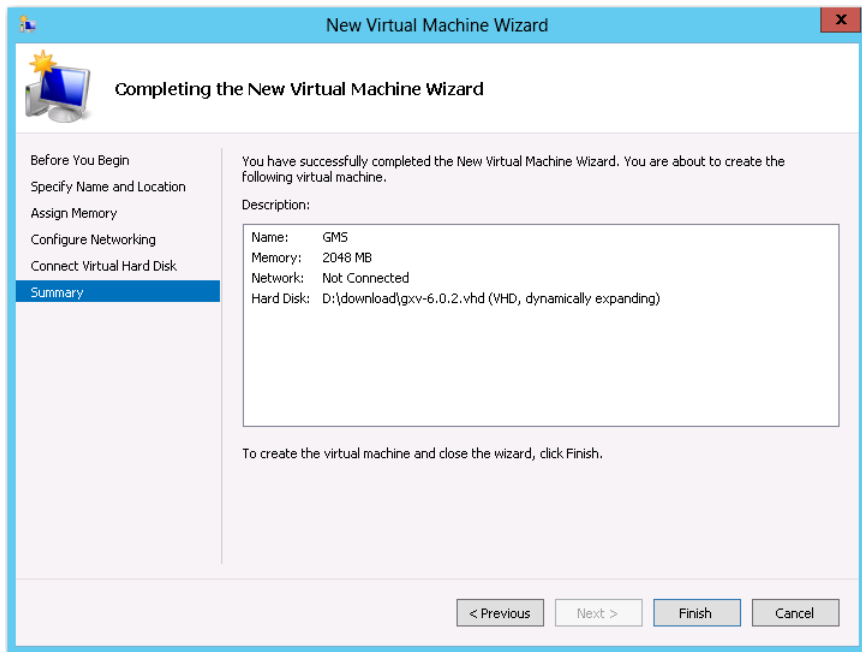


- h. Click **Next**. The **Connect Virtual Hard Disk** screen appears.

- i. Select **Use an existing virtual hard disk** and browse to the .VHD file you downloaded from Silver Peak's Support portal.



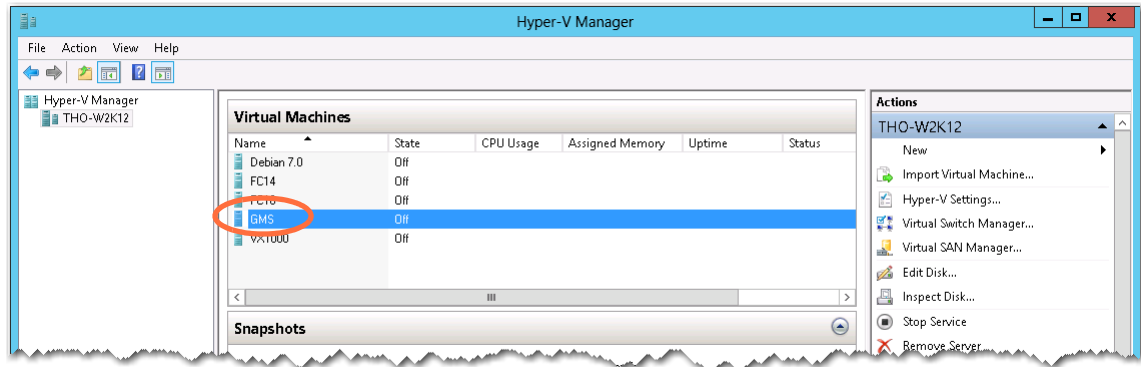
- j. Click **Next**. The wizard's **Summary** page appears.



- k. Review the configuration, and click **Finish**.

The wizard closes.

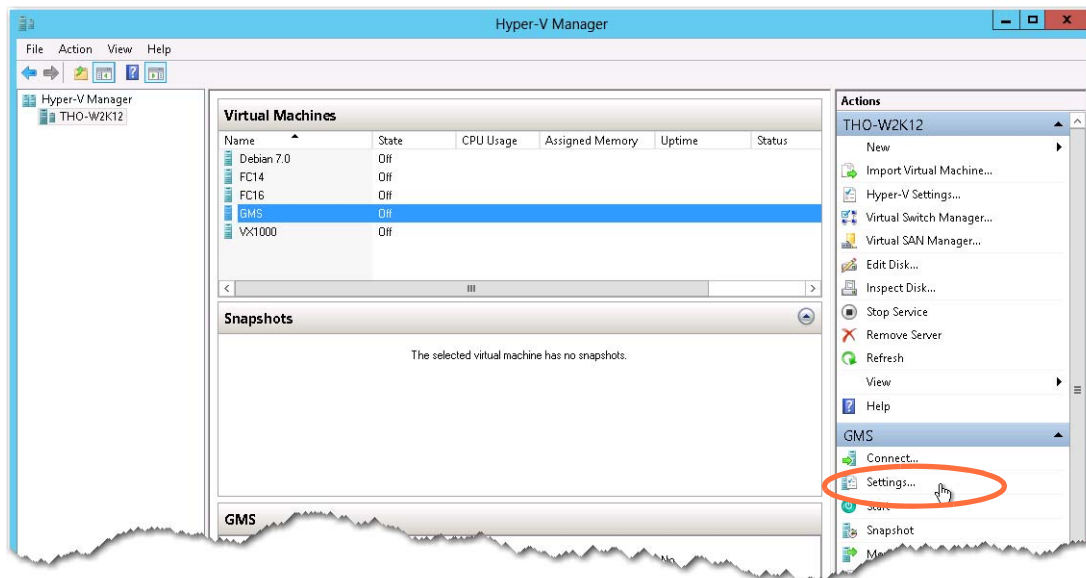
- I. Return to the **Server Manager** and notice that the new **GMS** server, **GMS**, now appears in the **Virtual Machines** section.



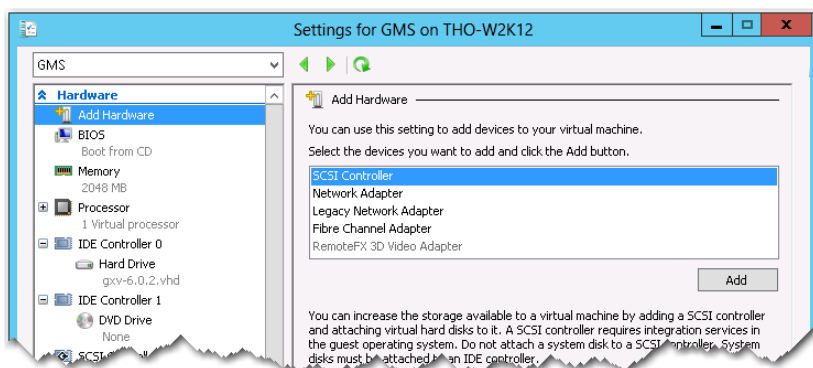
2 Configure the virtual machine

In this task, we'll add the legacy network adapter included in Silver Peak's software and delete the Hyper-V host's default network adapter.

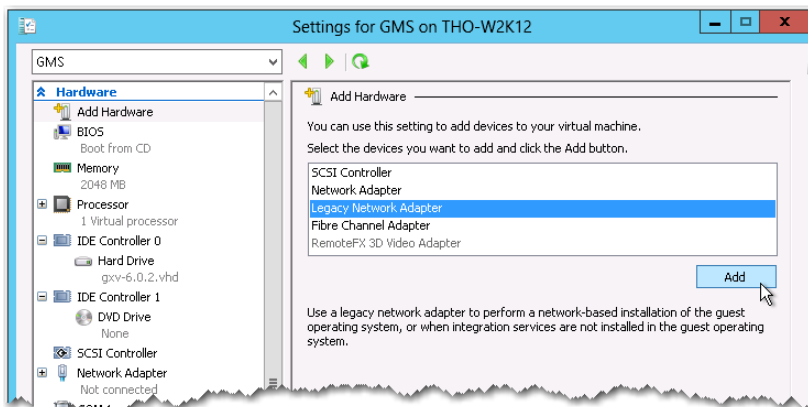
- a. Under **Virtual Machines**, select **GMS**, and from the **Actions** pane on the right, select **Settings**.



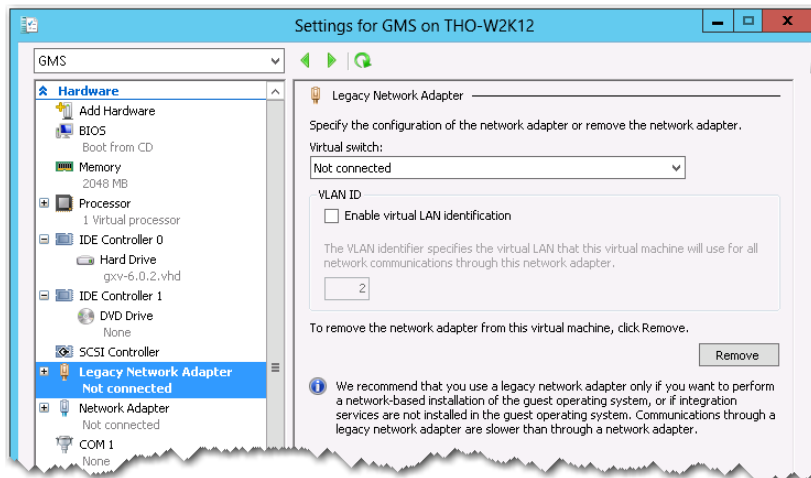
The **Setting for [GMS]** page appears, with **Add Hardware** selected on the left, by default.



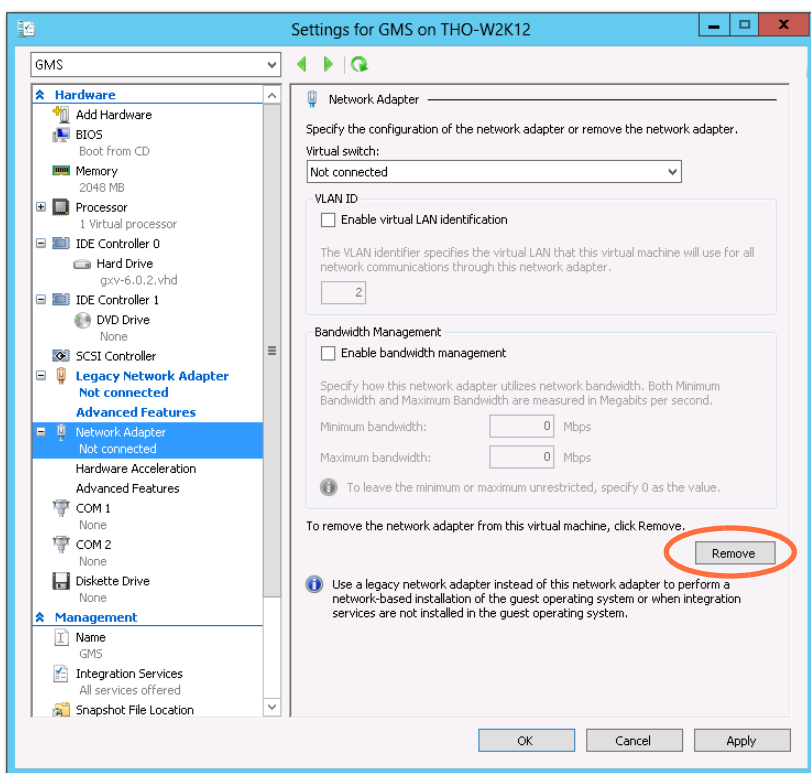
- b. In the **Add Hardware** area, select **Legacy Network Adapter** and click **Add**.



The **Legacy Network Adapter** page appears.



- c. Accept the defaults, and click **OK**.
- d. On the left, click **Network Adapter** to display the **Network Adapter** page on the right, and click **Remove**.

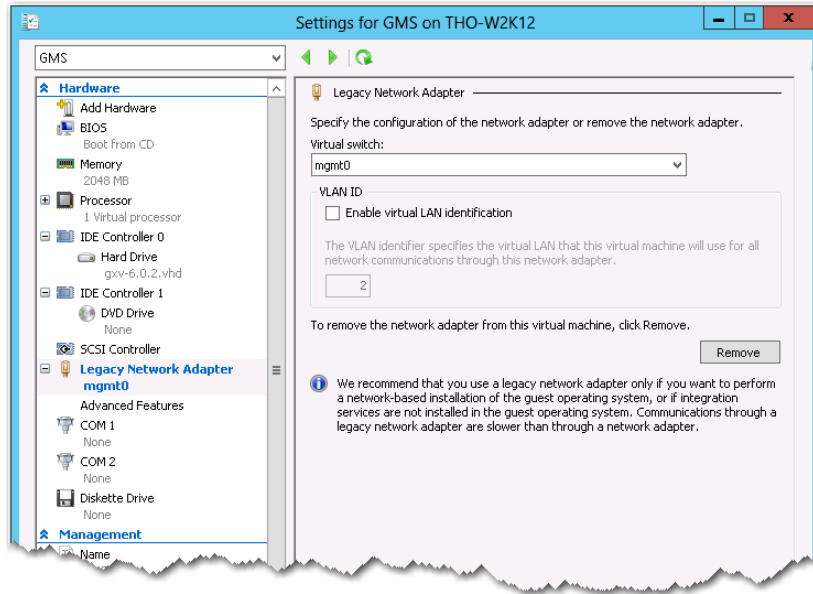


The left pane displays **Network Adapter**. Click **OK**.

Hyper-V removes **Network Adapter** from the listing.

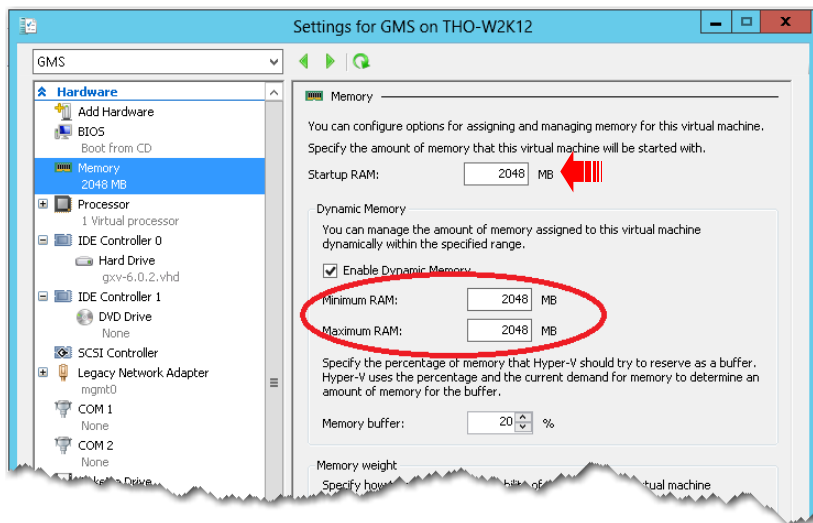
- e. In the left pane, again select **Legacy Network Adapter**.

- f. In the **Virtual switch** field, select **mgmt0**.



- g. Select **Memory** and change both **Minimum RAM** and **Maximum RAM** to be the same as the **Startup RAM** value you entered earlier, in the wizard.

In this example, the startup RAM is **2048 MB**.

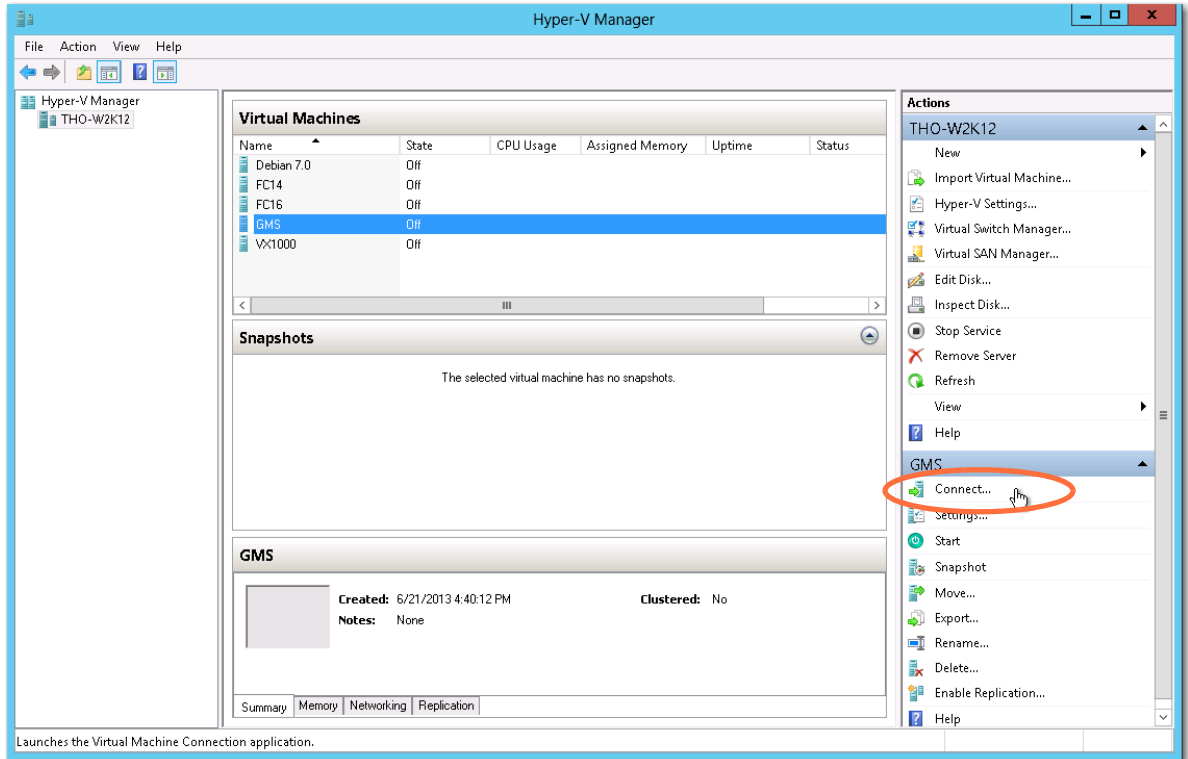


- h. Click **OK**. The **Settings** window closes.

Now you can power on the GMS server:

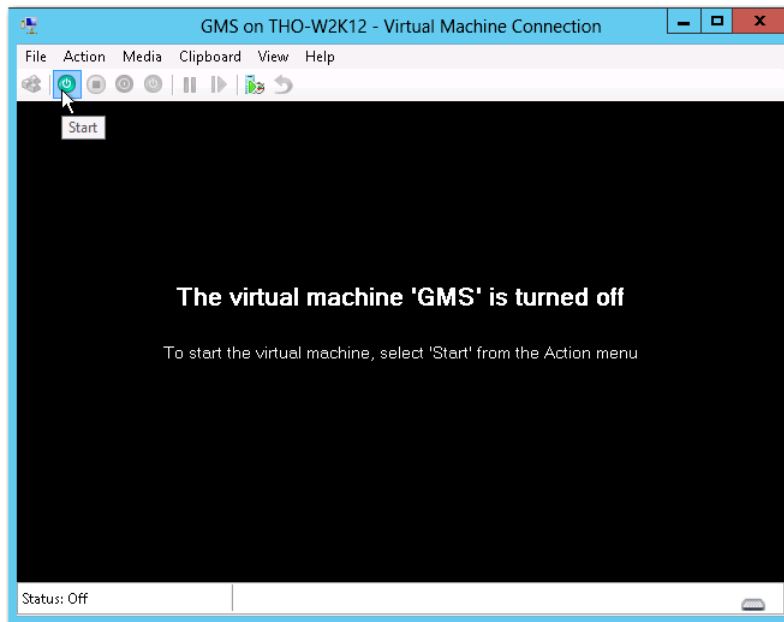
- i. Return to the **Hyper-V Manager** window, and in the **Virtual Machines** area, select **GMS**.

- j. In the right pane, click **Connect**.



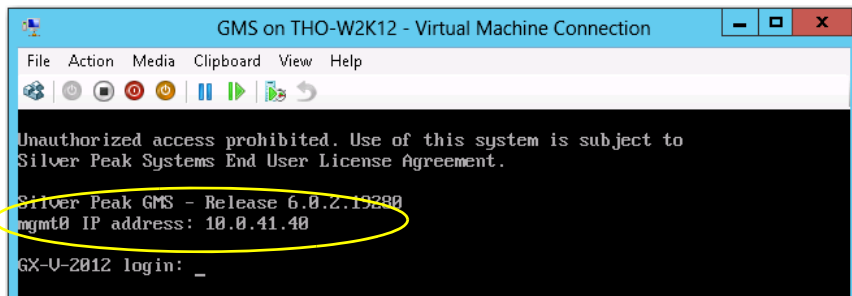
A console window appears.

- k. To power on the virtual machine, click the **Start** icon.



- l. After the GX-V finishes booting up, a console window displays the **mgmt0** IP address for the virtual GMS server—this is also the GMS server's IP address. You'll need that for the next step.

If your environment is not configured for DHCP, then you'll need to run the following script, and assign your own variables. Use `admin` for both the username and the password.



SCRIPT for non-DHCP environment

```
gmsserver login: admin
```

```
gms@demo-gms's password: admin
```

```
-bash-2.05b$
```

```
-bash-2.05b$ cd gms
```

```
-bash-2.05b$ ipsetup.sh
```

```
Fri May 20 14:41:21 PDT 2011 Warning: Using ...
```

```
====Start at Fri May 20 14:41:22 PDT 2011
```

[For the following prompts, enter values that are specific to your environment. For example, here we'll choose to assign an IP address of 10.0.40.61 to mgmt0.]

```
Enter IP address: 10.0.40.61
```

```
Enter mask (e.g. 255.255.252.0): 255.255.255.0
```

```
Enter default gateway: 10.0.40.1
```

```
Enter hostname: selab2-gms
```

```
IP = 10.0.40.61
```

```
Mask = 255.255.255.0
```

```
Gateway = 10.0.40.1
```

```
Host = selab2-gms
```

```
Please confirm (y/n)? y
```

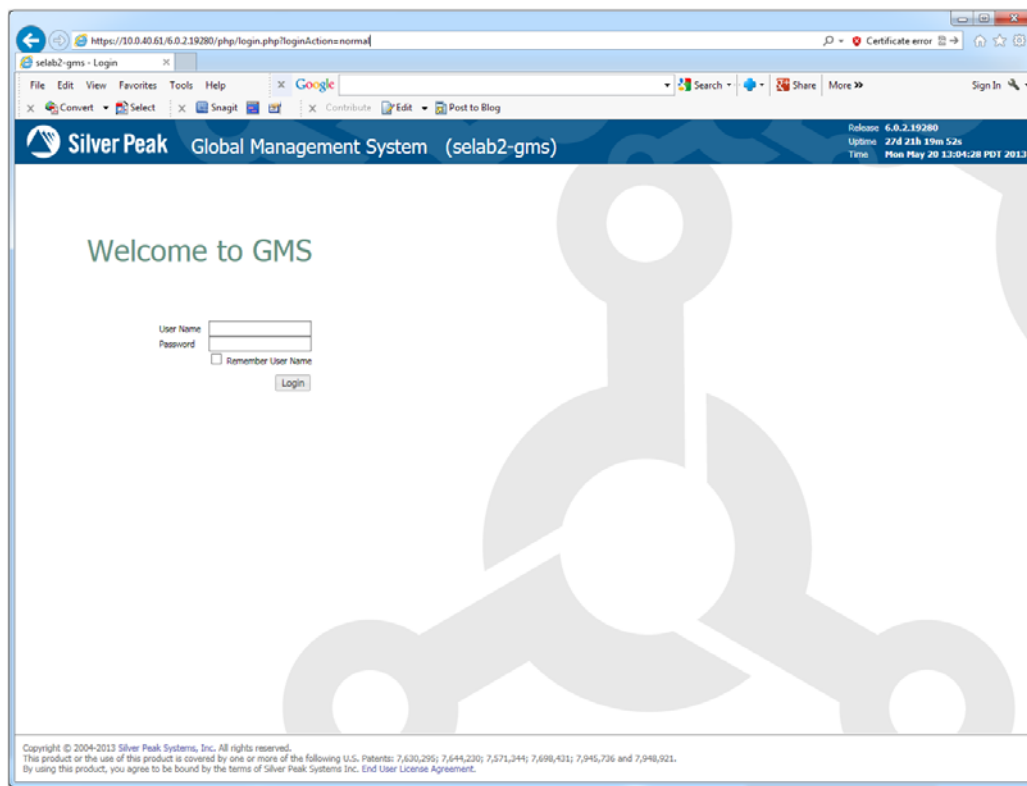
3 Configure the virtual GMS server

With the GMS initial configuration wizard, you can configure the following:

- GMS Name, Address, and Password
- Date/Time, GMS License
- [Optional] Email settings and recipients
- [Optional] Adding appliances
- [Optional] Configuring GMS backup

Be aware that it may take up to two minutes for your PC to get an IP address and open the initial configuration page.

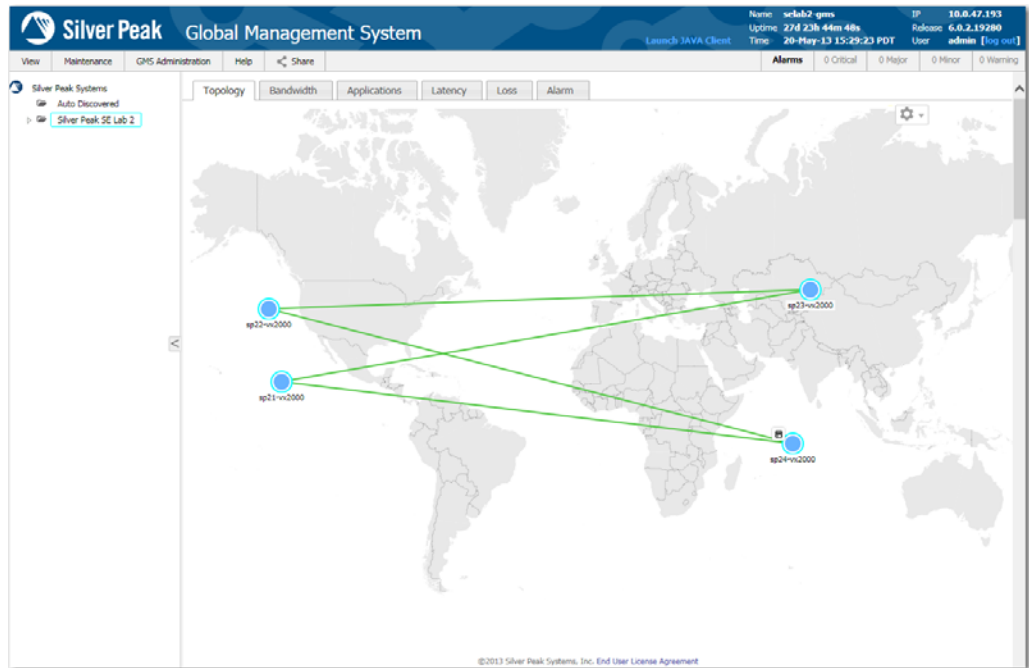
- a. Open any browser and enter the **mgmt0** IP address. The opening page appears.



- b. Enter the default username and password: **admin / admin**.
The first page of the **Getting Started Wizard** appears.

- c. Complete the wizard. It may take up to 30 seconds for the virtual appliance to configure.

The GMS dashboard appears.



You're now ready to deploy, manage, and monitor your physical and virtual Silver Peak appliances.