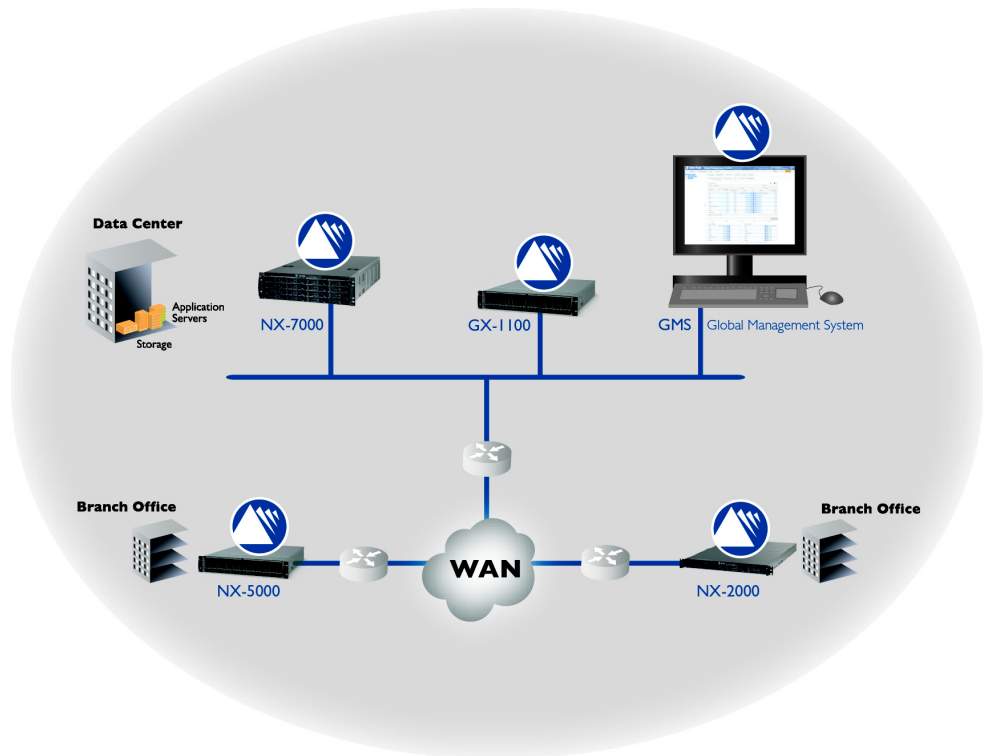


Quick Start Guide

GX-1100

Global Management System Server

© 2013 Silver Peak Systems, Inc.



The Silver Peak GX appliance hosts the Global Management System (GMS) server.

Before You Begin

- Verify the packing slip contents.
- Download the separate, rack mount instructions, and install the appliance into the Telco or Server rack.
- Supply circuits should be protected by a minimum 15A, maximum 20A circuit breaker.
- Choose an IP address for `mgmt0`.

SUMMARY OF TASKS

- 1 Rack mount the appliance**
- 2 Install the GX-1100 appliance into the network**
- 3 Connect the power cord to the power supply**
- 4 Configure the GMS server**



Silver Peak Systems, Inc.
4500 Great America Parkway
Suite 100
Santa Clara, CA 95054

1.877.210.7325 (toll-free in USA)
+1.408.935.1850
www.silver-peak.com/support

1 Rack mount the appliance

Silver Peak appliances contain embedded hard disk drives. Therefore, securely rack mount the appliance to stabilize it against excessive vibration, referring to the separate rack-mount instruction page.

2 Install the GX-1100 appliance into the network

In this step, you'll assign an IP address to the **mgmt0** interface.

The **STANDARD PROCEDURE** involves cabling to the **mgmt1** interface and running the initial configuration wizard, which lets you configure the **mgmt0** interface.

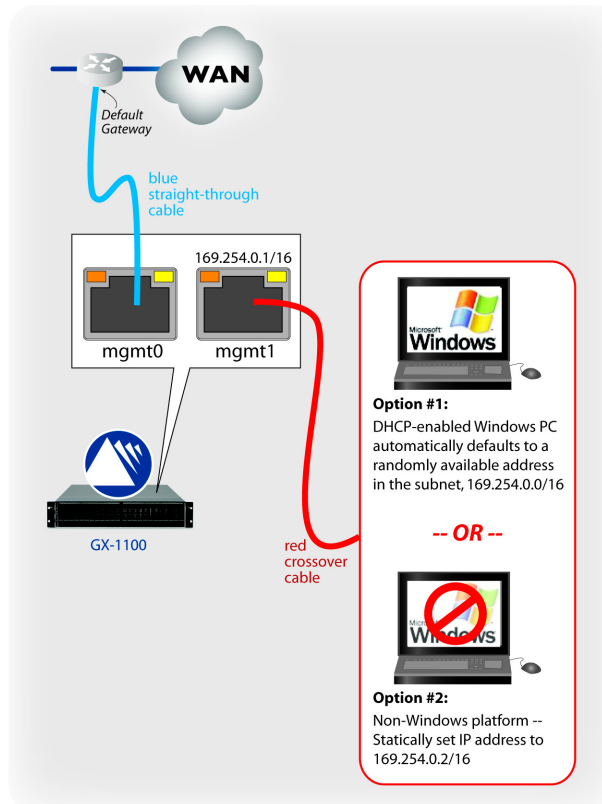
However, if your environment is **not** running DHCP **and** you're using the GX appliance's serial port **instead** of the **mgmt** ports, then skip down to **CORNER CASE CONFIGURATION: No DHCP, serial port connection** and manually run the script to assign an IP address and hostname.

STANDARD PROCEDURE

Silver Peak assigns the **mgmt1** ethernet interface a default IP address of **169.254.0.1** and a subnet mask of **/16** (the same as **255.255.0.0**).

Both RJ-45 Gigabit Ethernet interfaces (**mgmt0** and **mgmt1**) support MDI/MDI-X and auto-negotiation.

To cable the appliance into the network, refer to the diagram and do the following:



- a. Identify the **mgmt0** and **mgmt1** interfaces on the rear of the GX-1100 appliance.
- b. Using the **blue** straight-through cable, connect the appliance's **mgmt0** interface to the identified network equipment interface.
- c. Using the **red** crossover cable, connect the appliance's **mgmt1** interface to your PC.

CORNER CASE CONFIGURATION: No DHCP, serial port connection

If your environment is not configured for DHCP, then you'll need to run the following script and assign your own variables. Use **admin** for both the username and the password.

SCRIPT for non-DHCP environment

```
gmsserver login: admin
gms@demo-gms's password: admin
-bash-2.05b$
-bash-2.05b$ cd gms
-bash-2.05b$ ipsetup.sh
Fri May 20 14:41:21 PDT 2011 Warning: Using ...
====Start at Fri May 20 14:41:22 PDT 2011
[For the following prompts, enter values that are specific to your environment.]
Enter IP address: 10.10.10.10
Enter mask (e.g. 255.255.252.0): 255.255.255.0
Enter default gateway: 10.10.10.1
Enter hostname: pod1gms
IP = 10.10.10.10
Mask = 255.255.255.0
Gateway = 10.10.10.1
Host = pod1gms
Please confirm (y/n)? y
```

3 Connect the power cord to the power supply

- a. Connect the power cable to the back of the Silver Peak appliance, and then connect the other end of the power cable to your local power source.
- b. If the power is off, turn it on.
- c. On the front panel, verify that the **Power** LED illuminates.

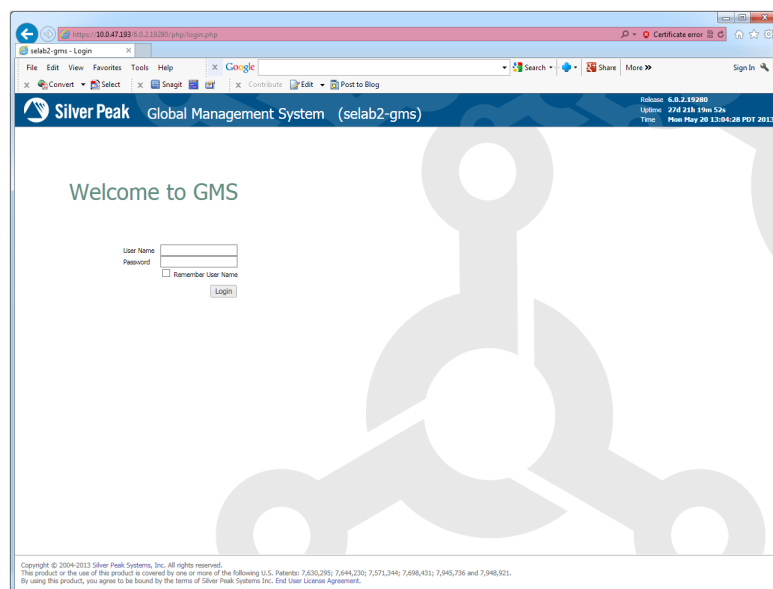
4 Configure the GMS server

With the GMS initial configuration wizard, you can configure the following:

- GMS Name, Address, and Password
- Date/Time, GMS License
- [Optional] Email settings and recipients
- [Optional] Adding appliances
- [Optional] Configuring GMS backup

Be aware that it may take up to two minutes for your PC to get an IP address and open the initial configuration page.

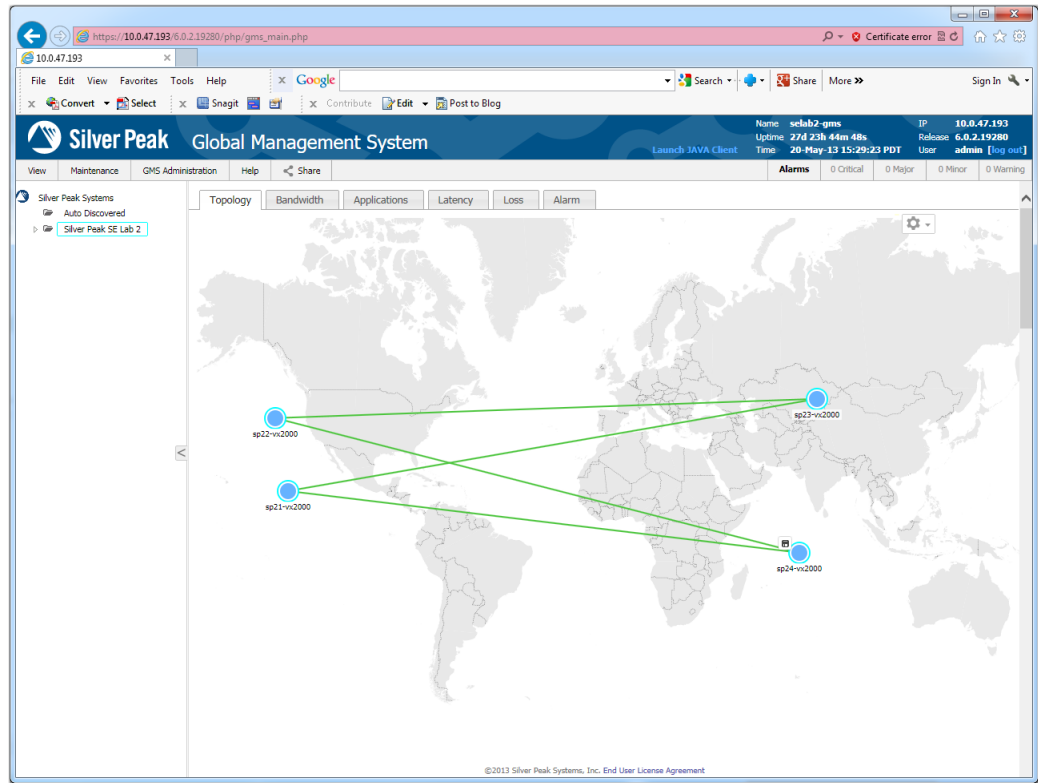
- a. Open any browser and enter **169.254.0.1**. This is the default IP address of the appliance's **mgmt1** interface. The opening page appears.



- b. Enter the default username and password: **admin / admin**. The first page of the **Getting Started Wizard** appears.

- c. Complete the wizard. It may take up to 30 seconds for the appliance to configure.

The GMS dashboard appears.



You're now ready to deploy, manage, and monitor your physical and virtual Silver Peak appliances.