

Quick Start Guide

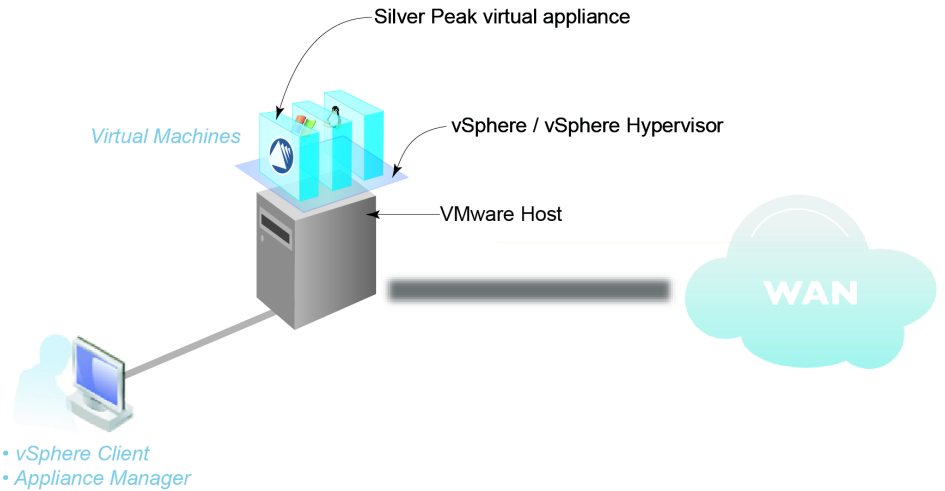
VELOCITY

· VRX REPLICATION ACCELERATOR ·

VMware vSphere / vSphere Hypervisor

· **Server Mode** ·
(Single-Interface Deployment)

© 2014 Silver Peak Systems, Inc.



Before You Begin

- Comply with the [Velocity Replication Accelerator \(VRX\) Host System Requirements](#) [PN 200778-001]
- Download the virtual appliance OVF template file:
 - For a 30-day free trial, go to the [Silver Peak Marketplace](#).
 - If you've purchased the product, then log in at the [Silver Peak Support portal](#).
- Obtain a Velocity Replication Accelerator activation license key
- If not using DHCP, then an IP address for the Silver Peak appliance.

This Quick Start Guide only covers the single-interface Server mode, which uses **mgmt0** for data traffic.

NOTE: When you download the OVF template file and save it, Internet Explorer may change the suffix from **.ova** to **.tar**. If it does, change the suffix back to **.ova**.

SUMMARY OF TASKS

- 1 Deploy the Velocity Replication Accelerator's OVF template**
- 2 Establish connectivity to the virtual appliance**
- 3 Run the Appliance Manager initial configuration wizard**
- 4 Configure storage for redirection**



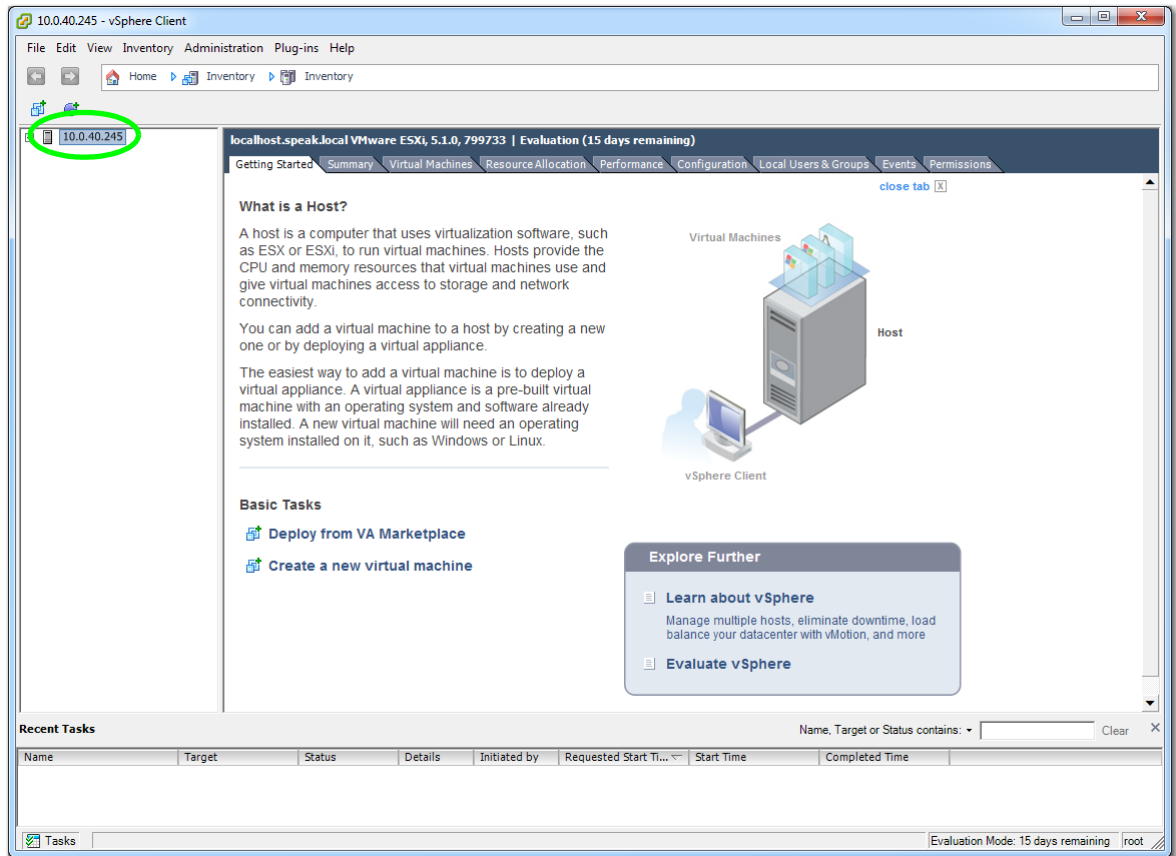
Silver Peak Systems, Inc.
2860 De La Cruz Blvd.
Suite 100
Santa Clara, CA 95050

1.877.210.7325 (toll-free in USA)
+1.408.935.1850
www.silver-peak.com/support

Deploy the Velocity Replication Accelerator's OVF template

- a. Launch the vSphere client, enter the IP address for the VMware vSphere host.

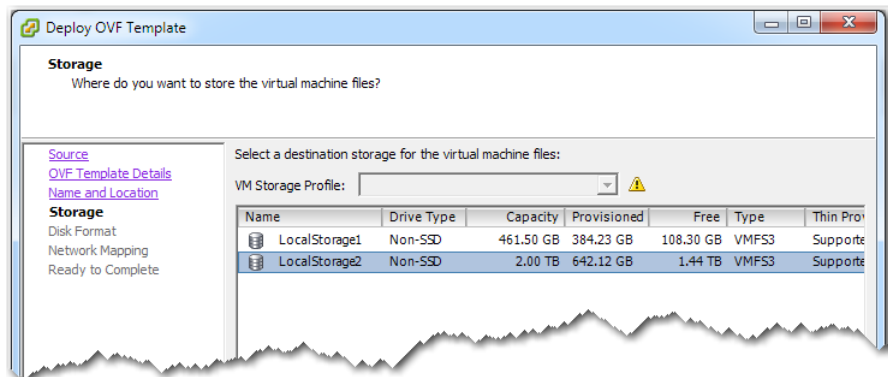
The host interface appears.



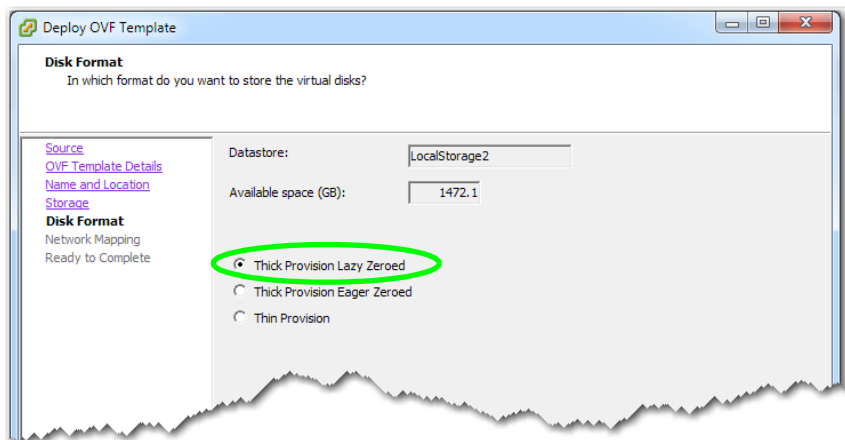
- b. From the **File** menu, select **Deploy OVF Template**, and follow the steps in the wizard.

NOTE: On the Name and Location page, we changed the virtual appliance's default name to **MySilverPeak**, to make this example more generic.

- c. When the Storage page appears, verify that the storage you select meets the requirements specified in the *Velocity Replication Accelerator Host System Requirements* [PN 200778-001].

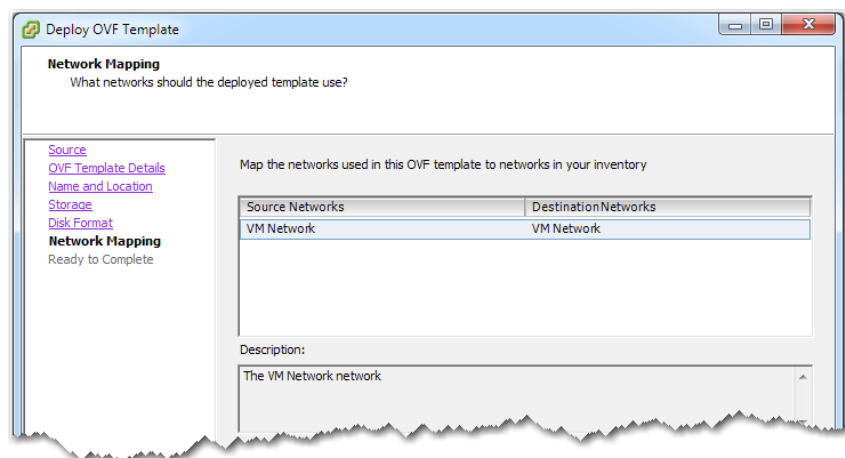


- d On the Disk Format page, make sure to select **Thick Provision Lazy Zeroed**.

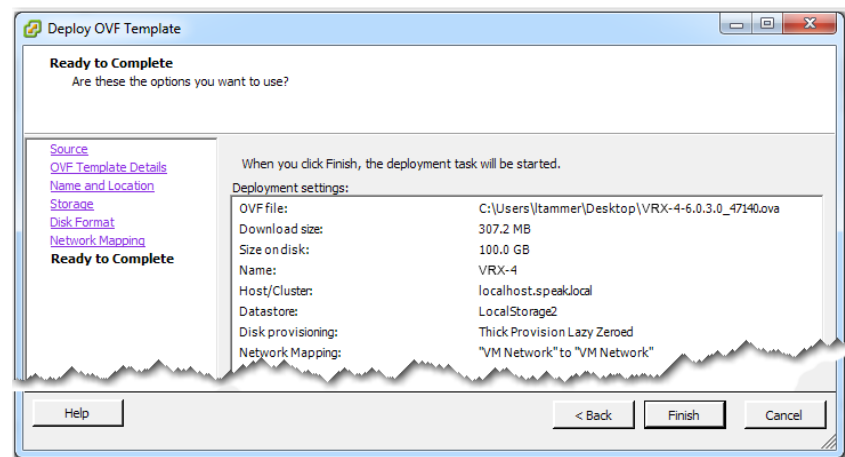


- e The Network Mapping page defaults to selecting **VM Network**. If this is not appropriate in your circumstances, then select the one that is.

Note that the network adapter associated with the Network you select must be on the same subnet as the storage array or replication/backup application.



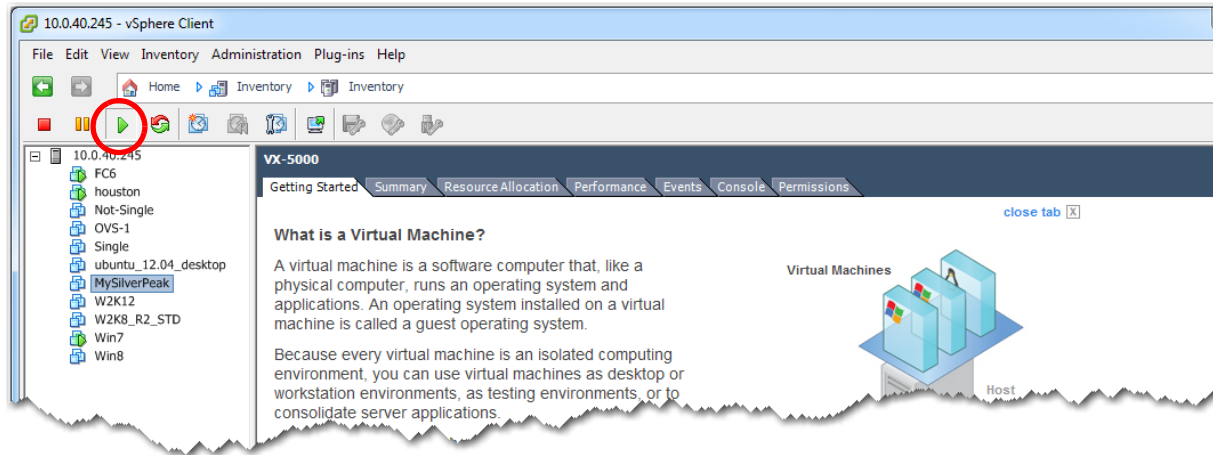
- f When the Ready to Complete page appears, go to the bottom of the page and click **Finish**.



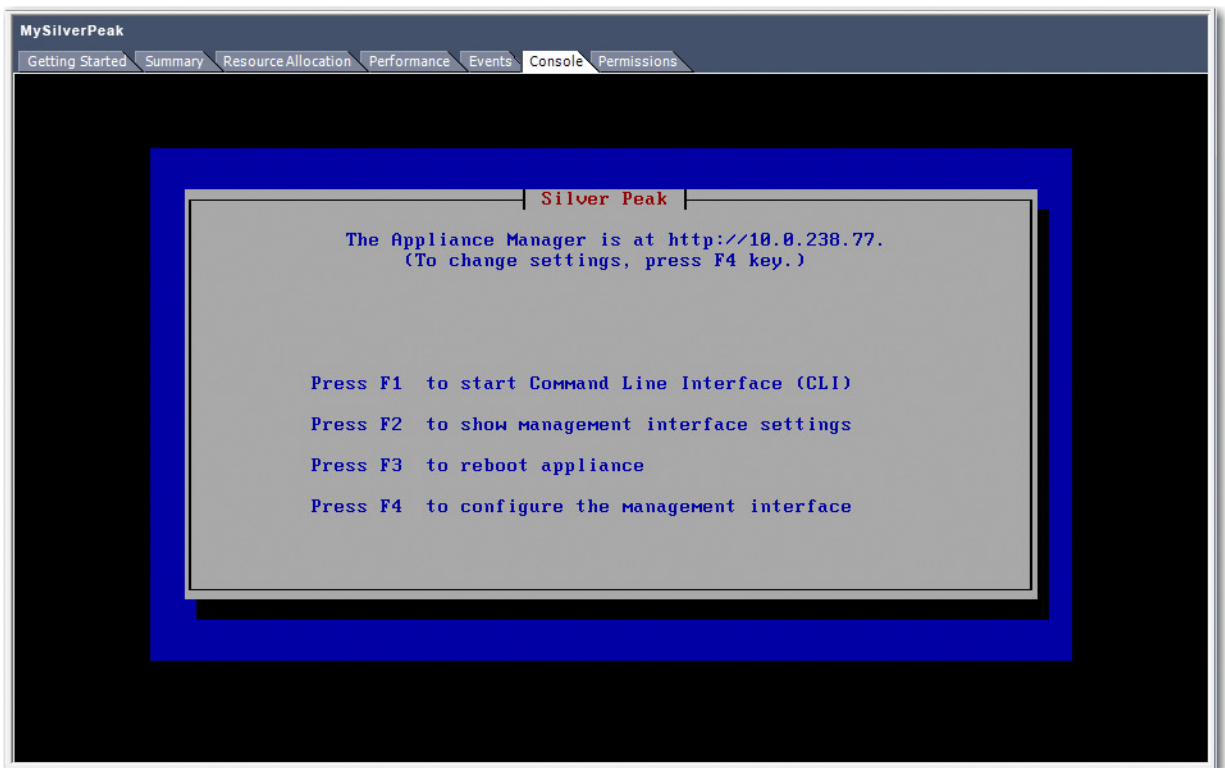
The Silver Peak appliance deploys.

2 Establish connectivity to the virtual appliance

- a. In the vSphere Client, select the newly deployed virtual appliance and click  to power it on.

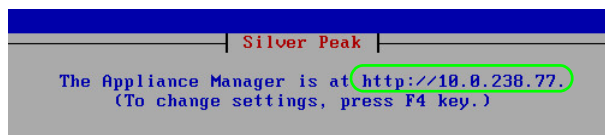


- b. Click the **Console** tab. The Silver Peak Console User Interface appears.

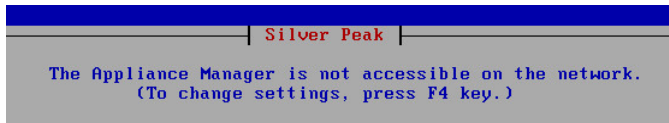


- c. The next task is to determine the virtual appliance's IP address:

- **If you're using DHCP**, the virtual appliance IP address displays in Silver Peak's Console User Interface.



- **If you're not using DHCP**, then you must configure the static IP address and default gateway.



In the virtual appliance console, press function key, **F4**, and complete the remaining steps.

When prompted to choose the type of management interface, select **Static** (as opposed to **DHCP**).

After selecting **Apply**, you can review the settings by selecting function key, **F2**.

-
- d. To verify connectivity, press function key, **F1**, and enter the following command sequence:

```
[vrx-appliance] > enable [ENTER]
```

```
[vrx-appliance] # show ip default-gateway [ENTER]
```

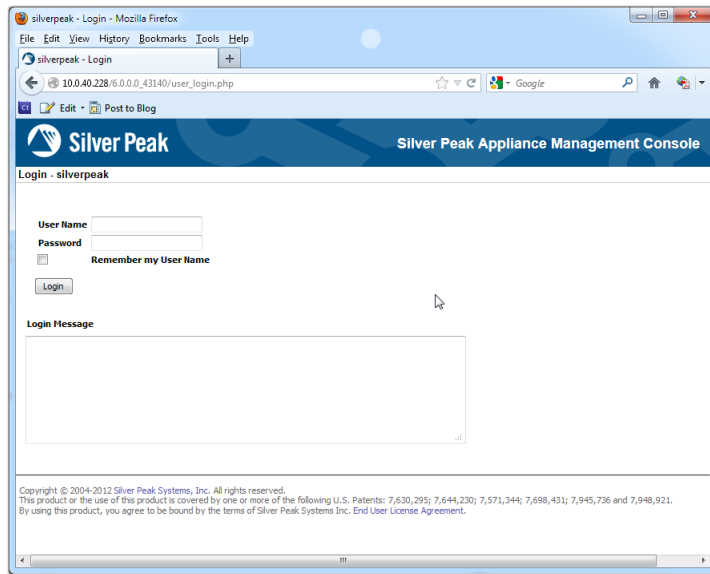
```
[vrx-appliance] # ping <default-gateway> [ENTER]
```

To stop the pinging, enter **CTRL-C**.

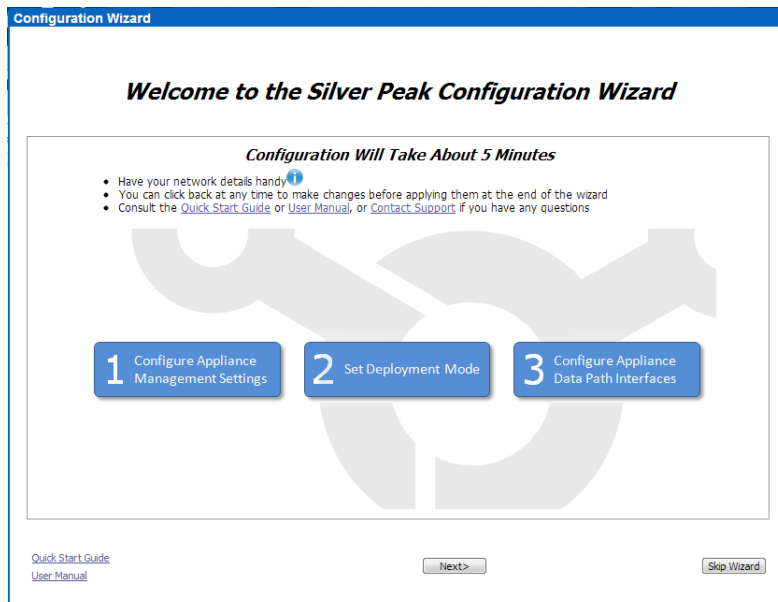
You are now ready to complete the Silver Peak virtual appliance initial configuration wizard.

3 Run the Appliance Manager initial configuration wizard

- a. In a browser, enter the IP address that you just discovered or configured. The Silver Peak Appliance Management Console login page appears.



- b. For both the **User Name** and **Password**, enter **admin**. The initial configuration wizard appears.



- c. Complete the remaining wizard screens.
- d. On the last wizard screen, click **Apply**. When the virtual appliance asks permission to reboot, allow it. The Appliance Manager takes a few minutes to reboot and return to the login page.

4 Configure storage for redirection

- a. Configure storage for redirection. There are two ways to accomplish this:
 - Configure a static route to direct replication traffic to the Velocity appliance
 - Change the default gateway for all replication ports to use the Velocity appliance

 - b. You can download [specialized storage configuration guides](#) from the Velocity section of Silver Peak's website.
-