

## Quick Start Guide

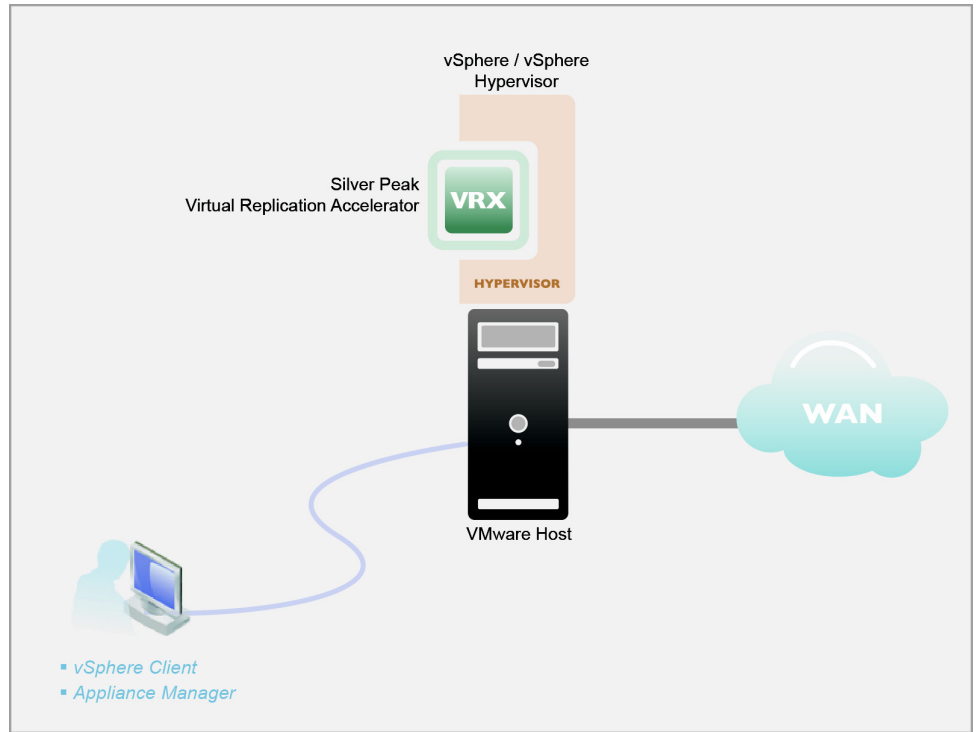
# VRX

· VIRTUAL REPLICATION  
ACCELERATOR ·

## VMware vSphere / vSphere Hypervisor

· **Server Mode** ·  
(Single-Interface Deployment)

© 2015 Silver Peak Systems, Inc.



This Quick Start Guide only covers the single-interface Server mode, which uses **mgmt0** for data traffic.

### Before You Begin

- Comply with the [VRX Virtual Appliance Host System Requirements](#) [PN 200778-001]
- Download the virtual appliance OVF template file:
  - For a 30-day free trial, go to the [Silver Peak Marketplace](#).
  - If you've purchased the product, then log in at the [Silver Peak Support portal](#).
- Obtain a VRX Virtual Replication Accelerator activation license key
- If not using DHCP, then an IP address for the Silver Peak appliance.

NOTE: When you download the OVF template file and save it, Internet Explorer may change the suffix from **.ova** to **.tar**. If it does, change the suffix back to **.ova**.

### SUMMARY OF TASKS

- 1 Deploy the VRX virtual appliance's OVF template**
- 2 Establish management connectivity**
- 3 Run the Appliance Manager initial configuration wizard**
- 4 Configure storage for redirection**



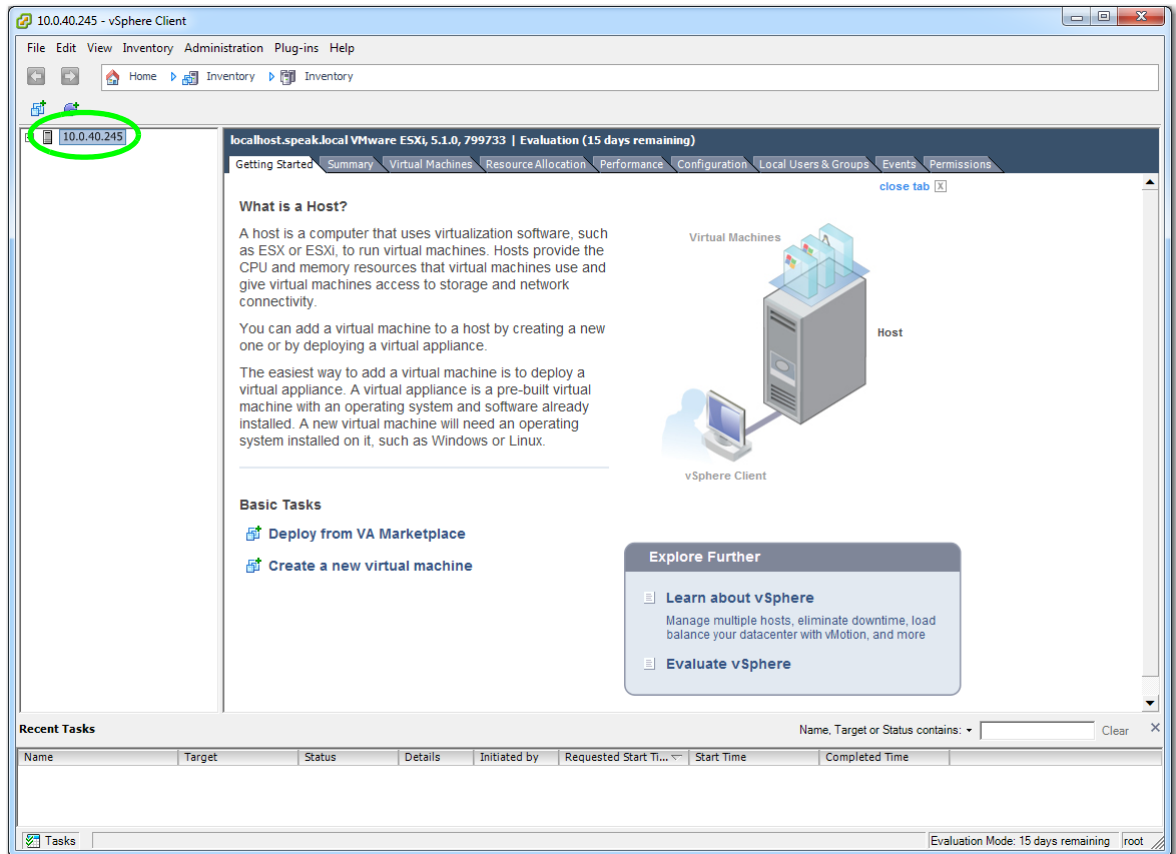
**Silver Peak Systems, Inc.**  
2860 De La Cruz Blvd.  
Suite 100  
Santa Clara, CA 95050

1.877.210.7325 (toll-free in USA)  
+1.408.935.1850  
[www.silver-peak.com/support](http://www.silver-peak.com/support)

## Deploy the VRX virtual appliance's OVF template

- a. Launch the vSphere client, enter the IP address for the VMware vSphere host.

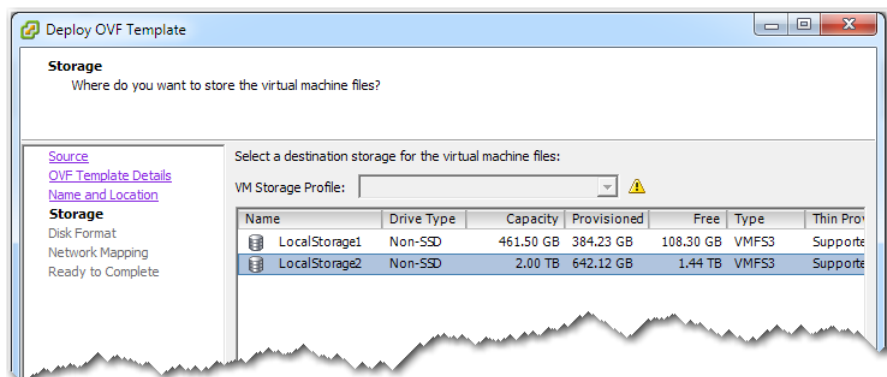
The host interface appears.



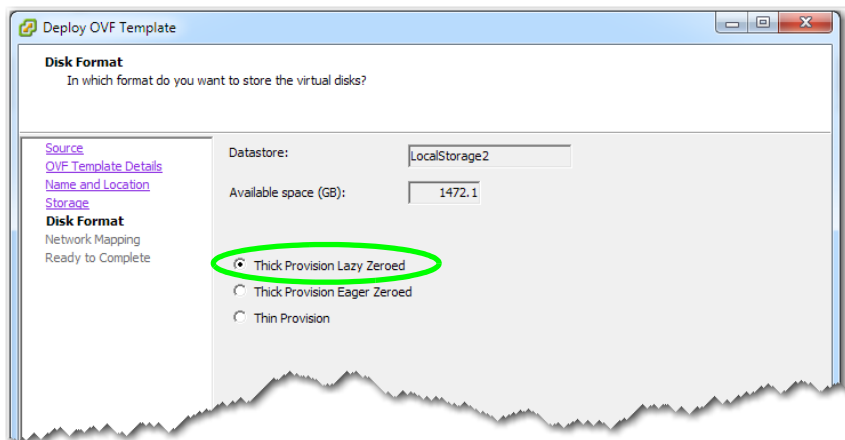
- b. From the **File** menu, select **Deploy OVF Template**, and follow the steps in the wizard.

**NOTE:** On the Name and Location page, we changed the virtual appliance's default name to **MySilverPeak**, to make this example more generic.

- c. When the Storage page appears, verify that the storage you select meets the requirements specified in the *VRX Virtual Appliance Host System Requirements* [PN 200778-001].

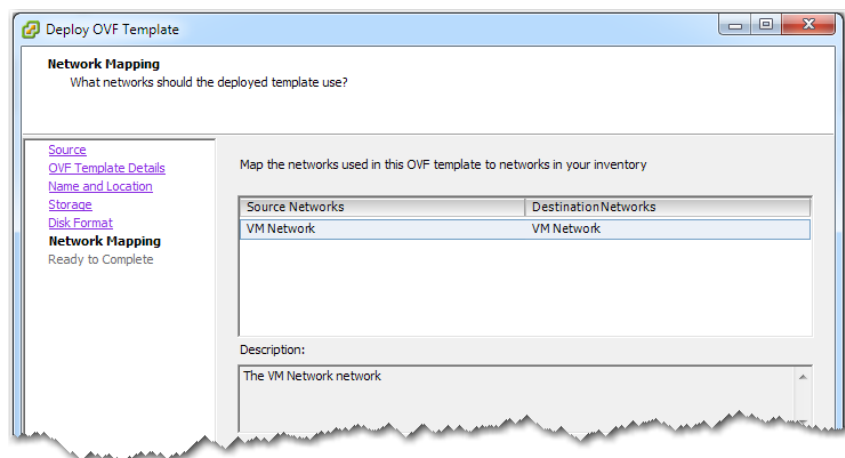


- d On the Disk Format page, make sure to select **Thick Provision Lazy Zeroed**.

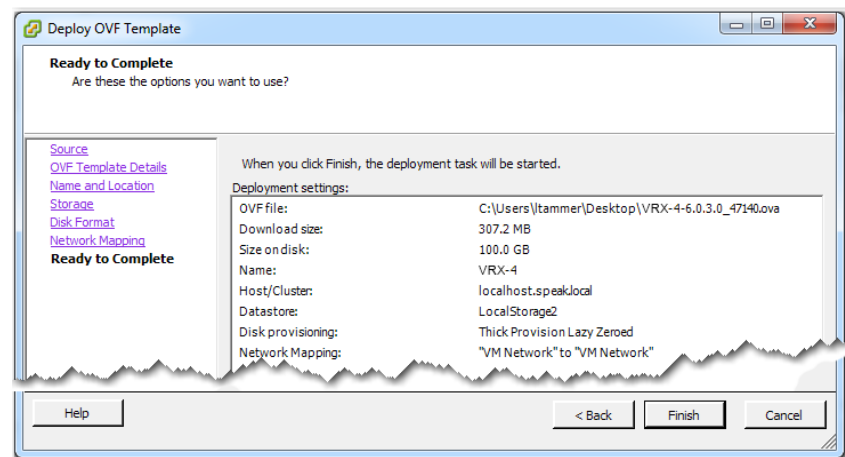


- e The Network Mapping page defaults to selecting **VM Network**. If this is not appropriate in your circumstances, then select the one that is.

Note that the network adapter associated with the Network you select must be on the same subnet as the storage array or replication/backup application.



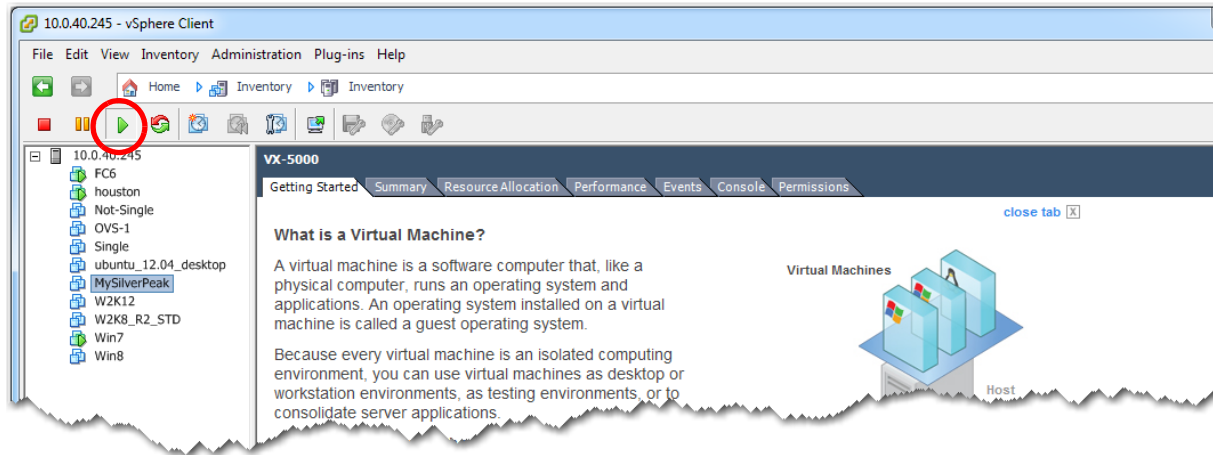
- f When the Ready to Complete page appears, go to the bottom of the page and click **Finish**.



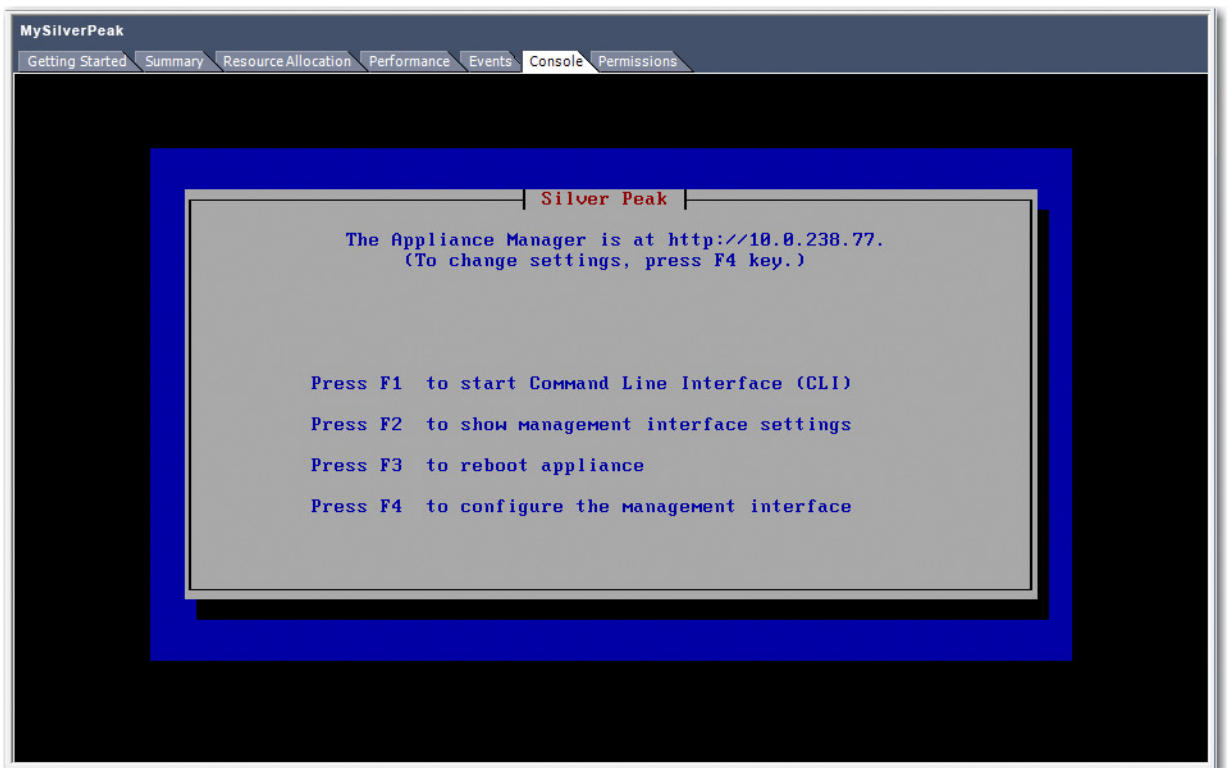
The Silver Peak appliance deploys.

## 2 Establish management connectivity

- a. In the vSphere Client, select the newly deployed virtual appliance and click  to power it on.

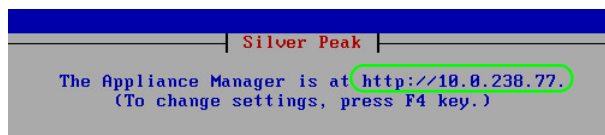


- b. Click the **Console** tab. The Silver Peak Console User Interface appears.

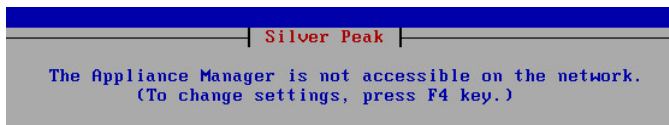


- c. The next task is to determine the virtual appliance's IP address:

- **If you're using DHCP**, the virtual appliance IP address displays in Silver Peak's Console User Interface.



- **If you're not using DHCP**, then you must configure the static IP address and default gateway.



In the virtual appliance console, press function key, **F4**, and complete the remaining steps.

When prompted to choose the type of management interface, select **Static** (as opposed to **DHCP**).

After selecting **Apply**, you can review the settings by selecting function key, **F2**.

- 
- d. To verify connectivity, press function key, **F1**, and enter the following command sequence:

```
[vrx-appliance] > enable [ENTER]
```

```
[vrx-appliance] # show ip default-gateway [ENTER]
```

```
[vrx-appliance] # ping <default-gateway> [ENTER]
```

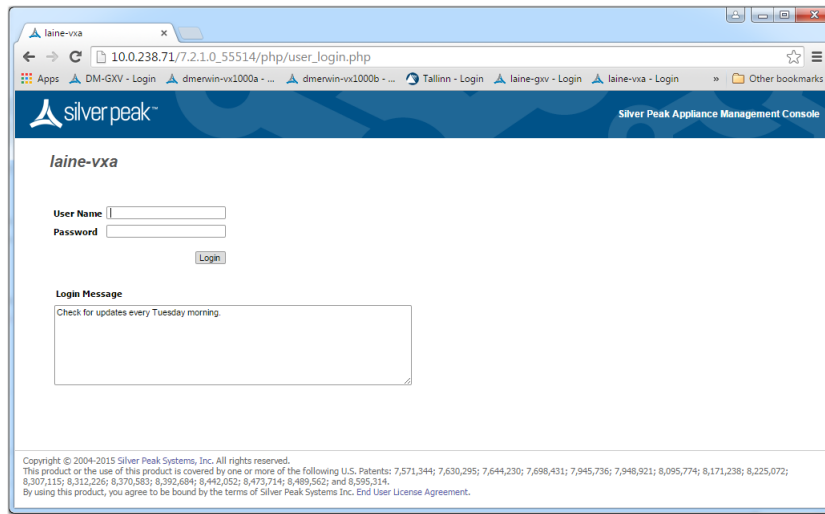
To stop the pinging, enter **CTRL-C**.

You are now ready to complete the Silver Peak virtual appliance initial configuration wizard.

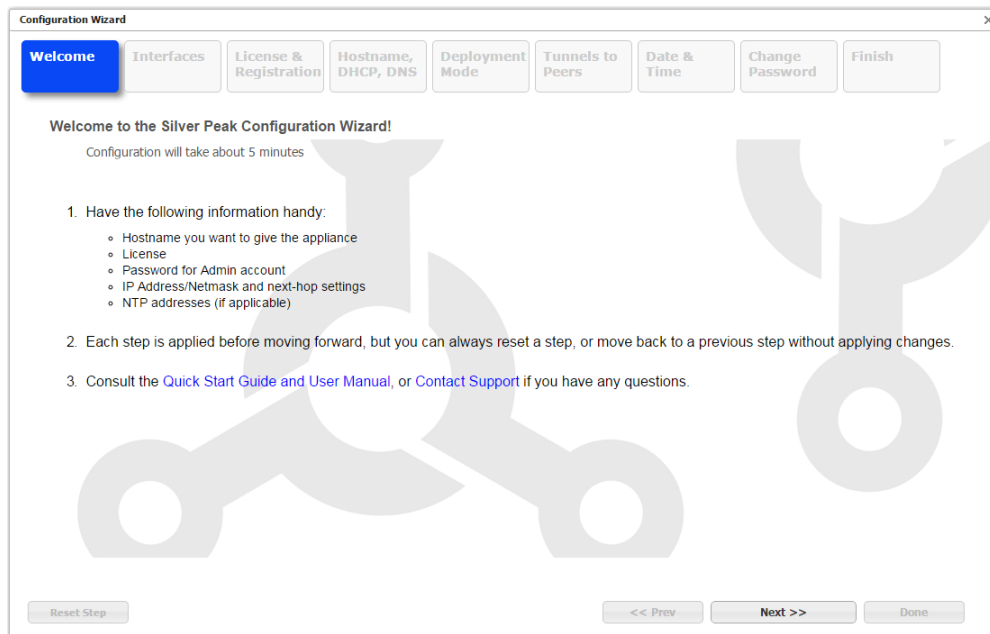
---

### 3 Run the Appliance Manager initial configuration wizard

- a. In a browser, enter the IP address that you just discovered or configured. The Silver Peak Appliance Management Console login page appears.



- b. For both the **User Name** and **Password**, enter **admin**. The initial configuration wizard appears.



- c. Complete the remaining wizard screens.
- d. On the last wizard screen, click **Apply**. When the virtual appliance asks permission to reboot, allow it. The Appliance Manager takes a few minutes to reboot and return to the login page.

## 4 Configure storage for redirection

- a. Configure storage for redirection. There are two ways to accomplish this:
    - Configure a static route to direct replication traffic to the VRX appliance
    - Change the default gateway for all replication ports to use the VRX appliance
  
  - b. You can download [specialized storage configuration guides](#) from the Velocity section of Silver Peak's website.
-