

## Quick Start Guide

# VX

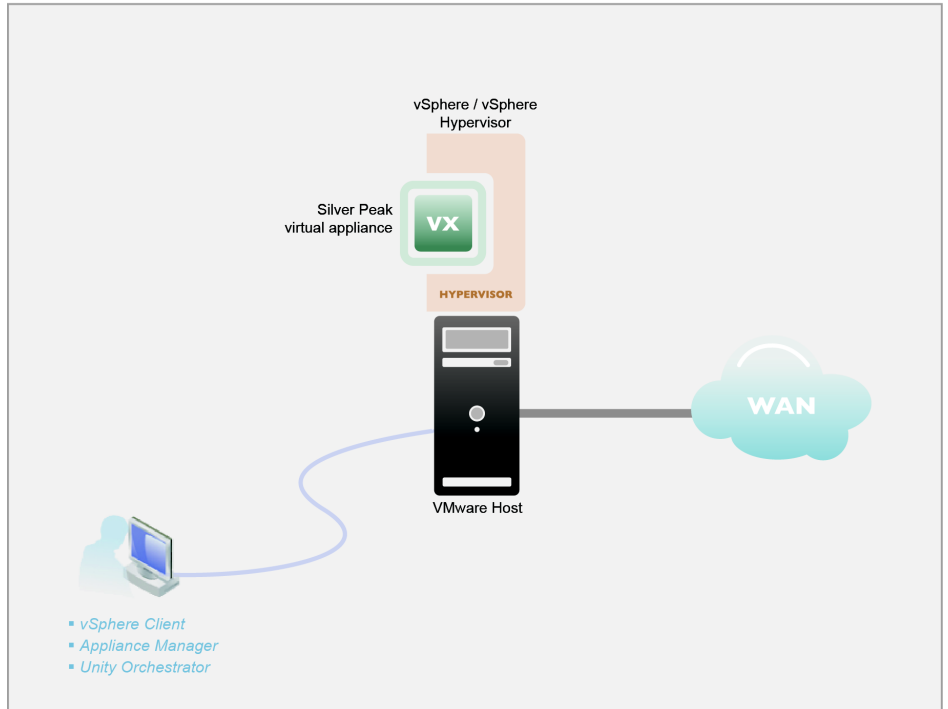
· VIRTUAL APPLIANCES ·

## VMware vSphere / vSphere Hypervisor

· **Server Mode** ·  
(Single-Interface Deployment)

© 2015 Silver Peak Systems, Inc.

### Host with Silver Peak VX appliance Server Mode



This Quick Start Guide only covers the single-interface Server mode, which uses **mgmt0** for data traffic.

### Before You Begin

- Comply with the [VX Virtual Appliance Host System Requirements](#) [PN 200566-001]
- Download the virtual appliance OVF template file:
  - For a 30-day free trial, go to the [Silver Peak Marketplace](#).
  - If you've purchased the product, then log in at the [Silver Peak Support portal](#).
- Obtain a VX virtual appliance activation license key
- If not using DHCP, then get an IP address for the Silver Peak appliance.

NOTE: When you download the OVF template file and save it, Internet Explorer may change the suffix from **.ova** to **.tar**. If it does, change the suffix back to **.ova**.

### SUMMARY OF TASKS

- 1** Deploy the VX virtual appliance's OVF template
- 2** Establish connectivity to the virtual appliance
- 3** Run the Appliance Manager initial configuration wizard



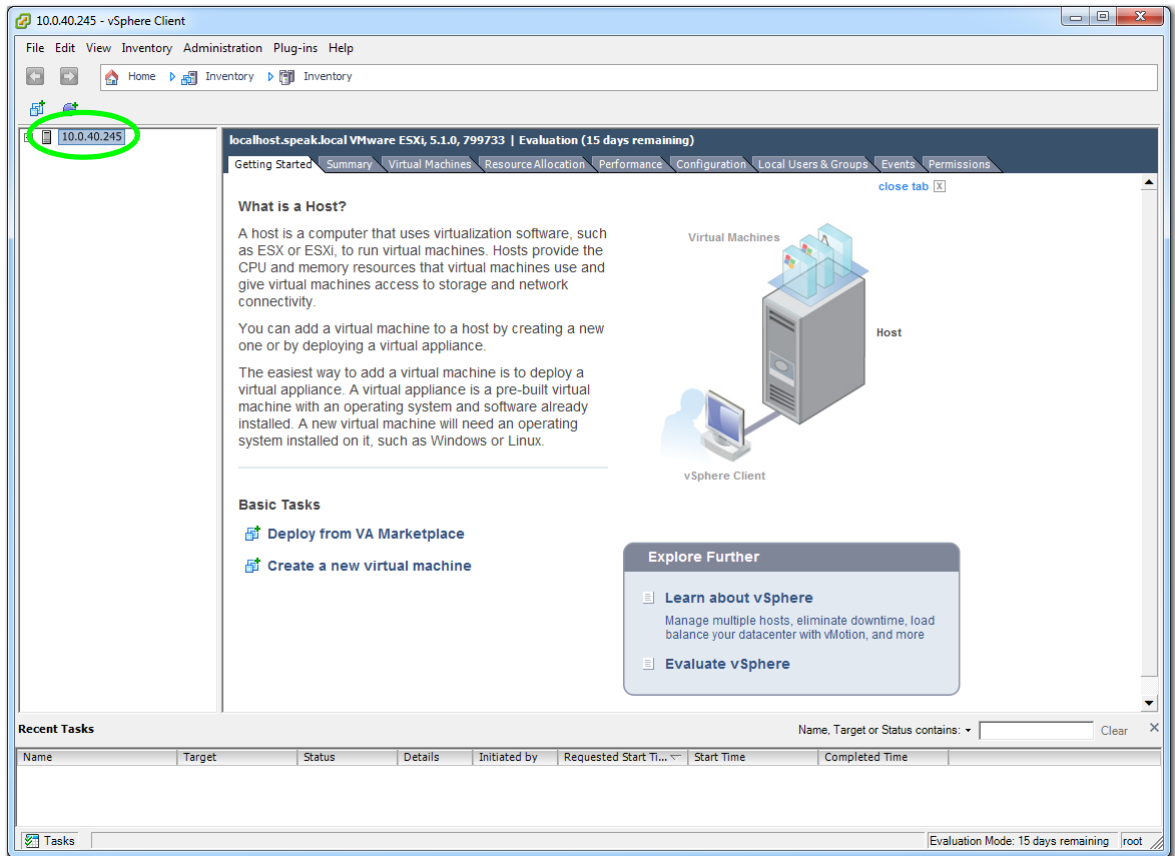
**Silver Peak Systems, Inc.**  
2860 De La Cruz Blvd.  
Suite 100  
Santa Clara, CA 95050

1.877.210.7325 (toll-free in USA)  
+1.408.935.1850  
[www.silver-peak.com/support](http://www.silver-peak.com/support)

## Deploy the VX virtual appliance's OVF template

- a. Launch the vSphere client, enter the IP address for the VMware vSphere host.

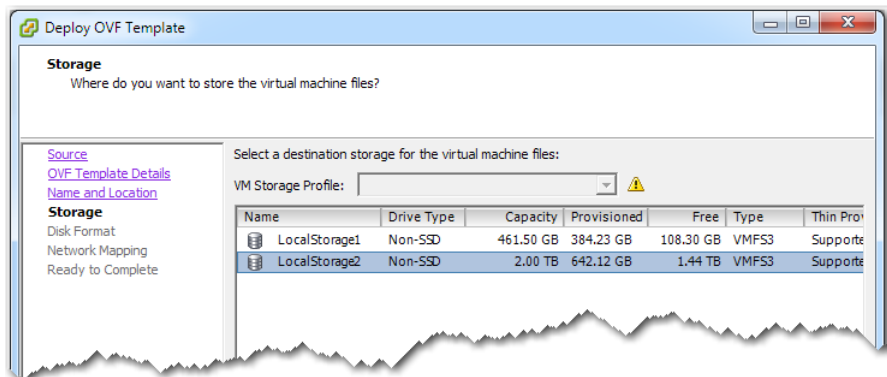
The host interface appears.



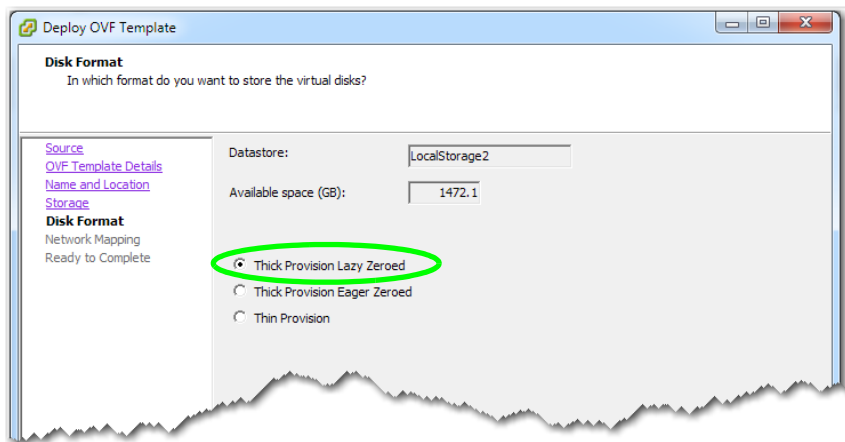
- b. From the **File** menu, select **Deploy OVF Template**, and follow the steps in the wizard.

**NOTE:** On the Name and Location page, we changed the virtual appliance's default name to **MySilverPeak**, to make this example more generic.

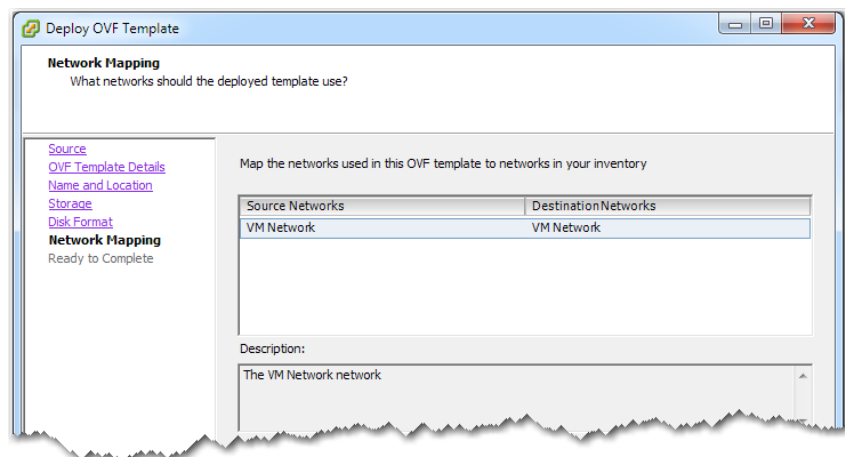
- c. When the Storage page appears, verify that the storage you select meets the requirements specified in the *VX Virtual Appliance Host System Requirements [PN 200565-001]*.



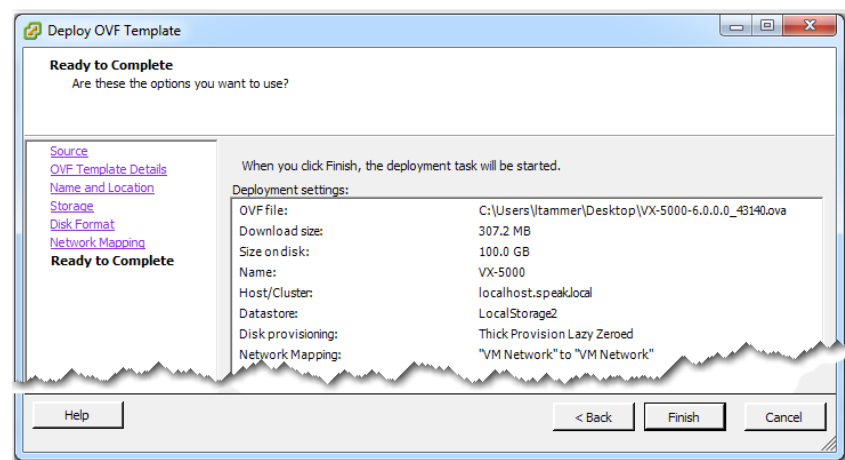
- d On the Disk Format page, make sure to select **Thick Provision Lazy Zeroed**.



- e The Network Mapping page defaults to selecting **VM Network**. If this is not appropriate in your circumstances, then select the one that is.



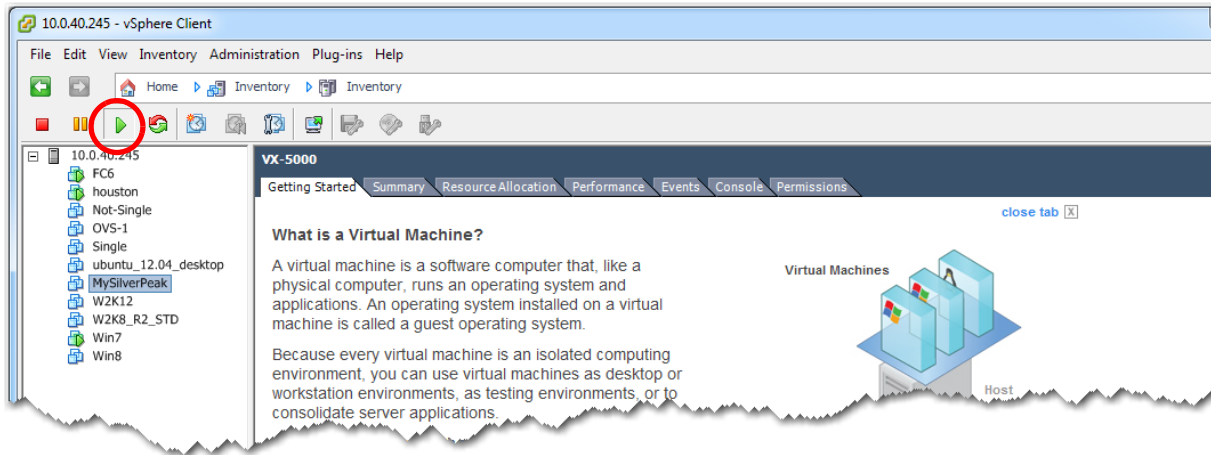
- f When the Ready to Complete page appears, go to the bottom of the page and click **Finish**.



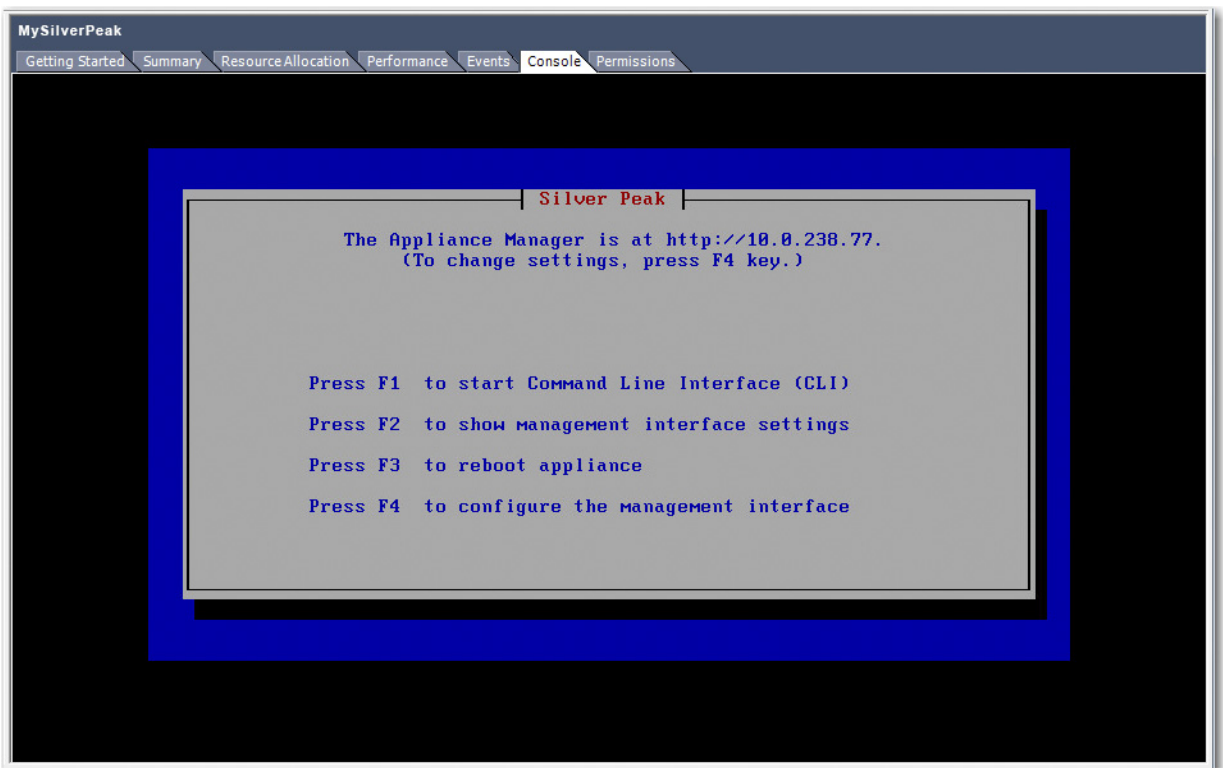
The Silver Peak appliance deploys.

## 2 Establish connectivity to the virtual appliance

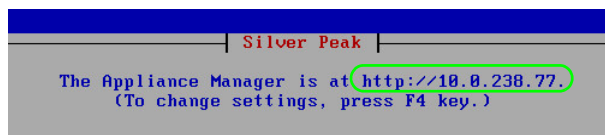
- a. In the vSphere Client, select the newly deployed virtual appliance and click  to power it on.



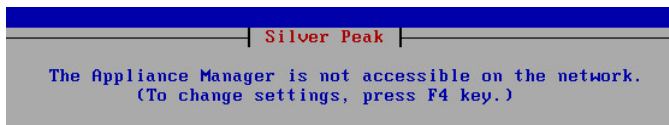
- b. Click the **Console** tab. The Silver Peak Console User Interface appears.



- c. The next task is to determine the virtual appliance's IP address:
  - **If you're using DHCP**, the virtual appliance IP address displays in Silver Peak's Console User Interface.



- **If you're not using DHCP**, then you must configure the static IP address and default gateway.



In the virtual appliance console, press function key, **F4**, and complete the remaining steps.

When prompted to choose the type of management interface, select **Static** (as opposed to **DHCP**).

After selecting **Apply**, you can review the settings by selecting function key, **F2**.

- 
- d. To verify connectivity, press function key, **F1**, and enter the following command sequence:

```
[vx-appliance] > enable [ENTER]
```

```
[vx-appliance] # show ip default-gateway [ENTER]
```

```
[vx-appliance] # ping <default-gateway> [ENTER]
```

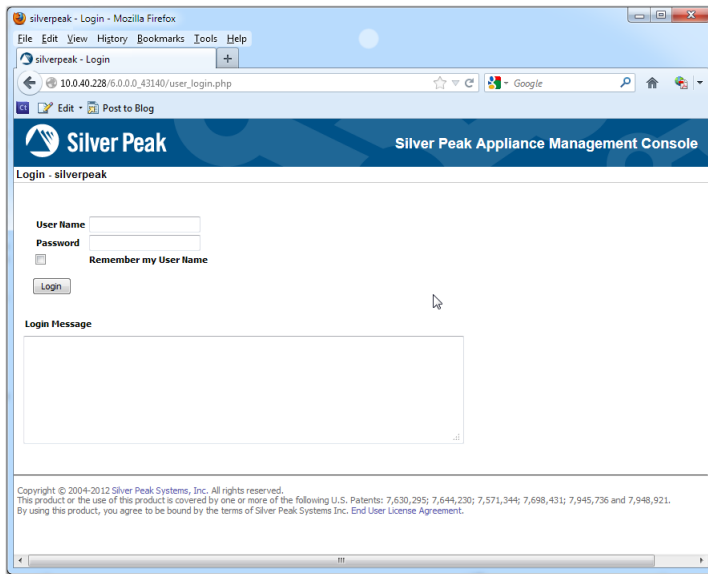
To stop the pinging, enter **CTRL-C**.

You are now ready to complete the Silver Peak virtual appliance initial configuration wizard.

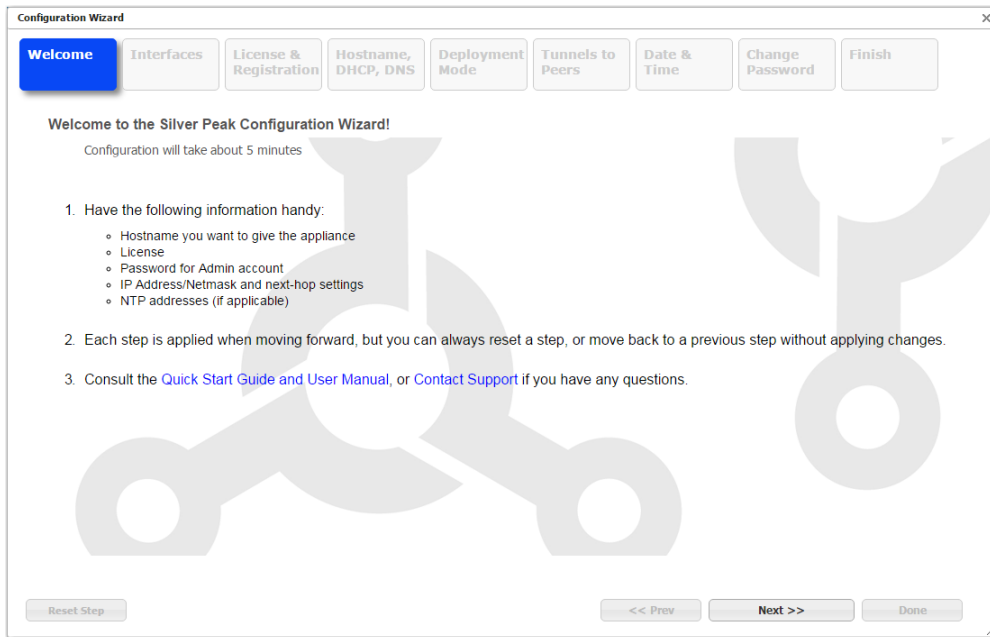
---

### 3 Run the Appliance Manager initial configuration wizard

- a. In a browser, enter the IP address that you just discovered or configured. The Silver Peak Appliance Management Console login page appears.



- b. For both the **User Name** and **Password**, enter **admin**. The initial configuration wizard appears.



- c. Complete the remaining wizard screens.
- d. On the last wizard screen, click **Apply**. When the virtual appliance asks permission to reboot, allow it. The Appliance Manager takes a few minutes to reboot and return to the login page.

You are now ready to start using the appliance.